



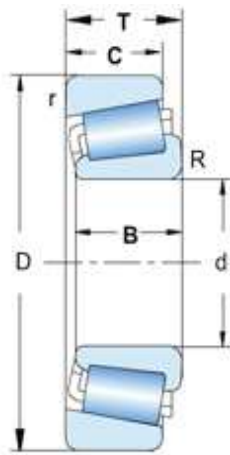
[www.sks-bearing.com](http://www.sks-bearing.com)

# SKS BEARING

47807 Krefeld, Germany

Tel: +49-17621845243: Fax: +49-21514869900

## TAPER ROLLER BEARING



Bearing No.	Boundary dimensions							Basic load rating(kN)		Limiting speed		Mass
	mm							Dynamic	Static	rpm		Kg
	d	D	T	B	C	R <sub>min</sub>	r <sub>min</sub>	Cr	Cor	Grease	Oil	≈
30202	15	35	11.75	11	10	0.6	0.6	11.9	13.5	9000	13000	0.053
30203	17	40	13.25	12	11	1	1	20.7	22.2	9000	13000	0.096
30204	20	47	15.25	14	12	1	1	28.2	30.9	8000	11000	0.128
30205	25	52	16.25	15	13	1	1	33.7	39.4	7500	10000	0.153
30206	30	62	17.25	16	14	1	1	43.3	50.6	6300	8500	0.232
30207	35	72	18.25	17	15	1.5	1.5	54.2	63.7	5300	7000	0.337
30208	40	80	19.75	18	16	1.5	1.5	63	74.1	4800	6300	0.422
30209	45	85	20.75	19	16	1.5	1.5	67	84	4500	6000	0.476
30210	50	90	21.75	20	17	1.5	1.5	76	97	4300	5600	0.538
30211	55	100	22.75	21	18	2	1.5	90	116	3800	5000	0.715
30212	60	110	23.75	22	19	2	1.5	103	132	3400	4500	0.905
30213	65	120	24.75	23	20	2	1.5	120	154	3000	4000	1.12
30214	70	125	26.25	24	21	2	1.5	132	174	3000	4000	1.26
30215	75	130	27.25	25	22	2	1.5	137	186	2800	3800	1.36

30216	80	140	28.25	26	22	2.5	2	160	213	2400	3400	1.67
30217	85	150	30.5	28	24	2.5	2	180	242	2200	3200	2.08
30218	90	160	32.5	30	26	2.5	2	199	270	2000	3000	2.53
30219	95	170	34.5	32	27	3	2.5	226	310	1900	2800	3.06
30220	100	180	37	34	29	3	2.5	253	351	1900	2800	3.72
30221	105	190	39	36	30	3	2.5	284	400	1800	2600	4.39
30222	110	200	41	38	32	3.5	2	314	445	1700	2400	5.21
30224	120	215	43.5	40	34	3	2.5	335	487	1600	2200	6.19
30226	130	230	43.75	40	34	4	3	364	525	1500	2000	6.94
30228	140	250	45.75	42	36	4	3	407	589	1400	1900	8.75
30230	150	270	49	45	38	4	3	449	651	1300	1800	10.8
30232	160	290	52	48	40	4	3	509	744	1100	1600	12.9
30234	170	310	57	52	43	5	4	616	865	1000	1500	19
30236	180	320	57	52	43	5	4	583	815	1000	1500	20
30238	190	340	60	55	46	3	2.5	721	1000	950	1400	24
30240	200	360	64	58	48	5	4	792	1120	900	1300	25

30302	15	42	14.25	13	11	1	1	22.9	21.7	9000	13000	0.096
30303	17	47	15.25	14	12	1	1	28.3	27.4	8500	12000	0.13
30304	20	52	16.25	15	13	1.5	1.5	33.2	33.3	8000	11000	0.166
30305	25	62	18.25	17	15	1.5	1.5	47	48.3	6700	9000	0.266
30306	30	72	20.75	19	16	1.5	1.5	59	63.9	5600	7500	0.391
30307	35	80	22.75	21	18	2	1.5	75.4	83.6	5000	6700	0.484
30308	40	90	25.25	23	20	2	1.5	90	108	4500	6000	0.751
30309	45	100	27.25	25	22	2	1.5	108	120	4000	5300	0.985
30310	50	110	29.25	27	23	2.5	2	130	159	3600	4800	1.28
30311	55	120	31.5	29	25	2.5	2	153	190	3200	4300	1.61
30312	60	130	33.5	31	26	3	2.5	170	211	3000	4000	1.95
30313	65	140	36	33	28	3	2.5	195	244	2600	3600	2.44
30314	70	150	38	35	30	3	2.5	187	220	2000	3000	2.99
30315	75	160	40	37	31	3	2.5	250	318	2200	3200	3.58
30316	80	170	42.5	39	33	3	2.5	278	356	2000	3000	4.27
30317	85	180	44.5	41	34	4	3	304	392	1900	2800	4.97
30318	90	190	46.5	43	36	4	3	341	445	1800	2600	5.79
30319	95	200	49.5	45	38	4	3	368	483	1800	2600	6.8
30320	100	215	51.5	47	39	4	3	402	490	1700	2400	8.2
30321	105	225	53.5	49	41	4	3	432	568	1600	2200	9.91
30322	110	240	54.5	50	42	4	3	471	619	1600	2200	11.5
30324	120	260	59.5	55	46	4	3	562	754	1500	2000	13.7
30326	130	280	63.75	58	49	5	4	639	864	1300	1800	17.1
30328	140	300	67.75	62	53	5	4	721	985	1200	1700	21.7
30330	150	320	72	65	55	5	4	825	1060	1100	1600	28.5
30332	160	340	75	68	58	5	4	880	1400	1100	1600	29
30334	170	360	80	72	62	5	4	1020	1340	950	1400	35

31305	25	62	18.25	17	13	1.5	1.5	40.7	46	5600	7500	0.264
31306	30	72	20.75	19	14	1.5	1.5	47.3	50	5000	6700	0.393
31307	35	80	22.75	21	15	2	1.5	61.6	67	4500	6000	0.518
31308	40	90	25.25	23	17	2	1.5	81	96	4000	5300	0.727
31309	45	100	27.25	25	18	2	1.5	91	102	3400	4500	0.947
31310	50	110	29.25	27	19	2.5	2	106	120	3200	4300	1.22
31311	55	120	31.5	29	21	2.5	2	130	158	2800	3800	1.56
31312	60	130	33.5	31	22	3	2.5	145	176	2600	3600	1.91
31313	65	140	36	33	23	3	2.5	165	202	2200	3200	2.39
31314	70	150	38	35	25	3	2.5	218	274	2400	3400	2.95
31315	75	160	40	37	26	3	2.5	209	245	1900	2800	3.39
31316	80	170	42.5	39	27	3	2.5	224	265	1900	2800	4.05
31317	85	180	44.5	41	28	4	3	242	285	1800	2600	4.6
31318	90	190	46.5	43	30	4	3	264	315	1700	2400	5.9
31319	95	200	49.5	45	32	4	3	292	355	1700	2400	6.95
31320	100	215	56.5	51	35	4	3	374	465	1600	2200	8.6
31321	105	225	58	53	36	4	3	402	500	1500	2000	9.65
31322	110	240	63	57	38	4	3	457	585	1400	1900	12
31324	120	260	68	62	42	4	3	539	695	1200	1700	15.5
31326	130	280	72	66	44	5	4	605	780	1100	1600	18.5
31328	140	300	77	70	47	5	4	693	900	1000	1500	24.5
31330	150	320	82	75	50	5	4	781	1020	950	1400	29.5

32004	20	42	15	15	12	0.6	0.6	27.3	31.5	9700	13000	0.96
32005	25	47	15	15	11.5	0.6	0.6	27	32.5	8000	11000	0.115
32006	30	55	17	17	13	1	1	35.8	44	6700	9000	0.172
32007	35	62	18	18	14	1	1	42.9	54	6000	8000	0.227
32008	40	68	19	19	14.5	1	1	52.8	71	5300	7000	0.77
32009	45	75	20	20	15.5	1	1	58	80	4800	6300	0.329
32010	50	80	20	20	15.5	1	1	60	88	4500	6000	0.365
32011	55	90	23	23	17.5	1.5	1.5	80	116	4000	5300	0.55
32012	60	95	23	23	17.5	1.5	1.5	82	122	3800	5000	0.586
32013	65	100	23	23	17.5	1.5	1.5	84	127	3400	4500	0.627
32014	70	110	25	25	19	1.5	1.5	101	153	3200	4300	0.842
32015	75	115	25	25	19	1.5	1.5	106	163	3000	4000	0.887
32016	80	125	29	29	22	1.5	1.5	138	216	2600	3600	1.27
32017	85	130	29	29	22	1.5	1.5	140	224	2400	3400	1.33
32018	90	140	32	32	24	2	1.5	168	270	2200	3200	1.73
32019	95	145	32	32	24	2	1.5	168	270	2200	3200	1.8
32020	100	150	32	32	24	2	1.5	172	280	2000	3000	1.87
32021	105	160	35	35	26	2.5	2	201	335	1900	2800	2.38
32022	110	170	38	38	29	2.5	2	233	390	1800	2600	3.05
32024	120	180	38	38	29	2.5	2	242	415	1800	2600	3.2

<b>32026</b>	130	200	45	45	34	2.5	2	314	540	1600	2200	4.86
<b>32028</b>	140	210	45	45	34	2.5	2	330	585	1600	2200	5.19
<b>32030</b>	150	225	48	48	36	3	2.5	369	655	1500	2000	6.33
<b>32032</b>	160	240	51	51	38	3	2.5	429	780	1300	1800	7.53
<b>32034</b>	170	260	57	57	43	3	2.5	512	915	1100	1600	10.6
<b>32036</b>	180	280	64	64	48	3	2.5	644	1160	1100	1600	14.5
<b>32038</b>	190	290	64	64	48	3	2.5	660	1200	1000	1500	15
<b>32040</b>	200	310	70	70	53	3	2.5	748	1370	950	1400	19.5
<b>32044</b>	220	340	76	76	57	4	3	897	1660	900	1300	25.5
<b>32048</b>	240	360	76	76	57	4	3	935	1800	850	1200	27.5

<b>32204</b>	20	47	19.25	18	15	1	1	36.5	39.5	8000	11000	0.161
<b>32205</b>	25	52	19.25	18	16	1	1	42	47	7500	10000	0.184
<b>32206</b>	30	62	21.25	20	17	1	1	51.8	63.9	6300	8500	0.29
<b>32207</b>	35	72	24.25	23	19	1.5	1.5	70.6	89.7	5300	7000	0.45
<b>32208</b>	40	80	24.75	23	19	1.5	1.5	77	97	4800	6300	0.535
<b>32209</b>	45	85	24.75	23	19	1.5	1.5	80	105	4500	6000	0.584
<b>32210</b>	50	90	24.75	23	19	1.5	1.5	76	97	4300	5600	0.646
<b>32211</b>	55	100	26.76	25	21	2	1.5	108	144	3800	5000	0.86
<b>32212</b>	60	110	29.75	28	24	2	1.5	132	181	3400	4500	1.16
<b>32213</b>	65	120	32.75	31	27	2	1.5	160	224	3000	4000	1.54
<b>32214</b>	70	125	33.25	31	27	2	1.5	168	238	2800	3800	1.63
<b>32215</b>	75	130	33.25	31	27	2	1.5	169	244	2600	3600	1.75
<b>32216</b>	80	140	35.25	33	28	2.5	2	197	280	2400	3400	2.13
<b>32217</b>	85	150	38.5	36	30	2.5	2	226	325	2200	3200	2.69
<b>32218</b>	90	160	42.5	40	34	2.5	2	269	396	2000	3000	3.43
<b>32219</b>	95	170	45.5	43	37	3	2.5	301	450	1900	2800	4.24
<b>32220</b>	100	180	49	46	39	3	2.5	340	513	1800	2600	3.72
<b>32221</b>	105	190	53	50	43	3	2.5	380	581	1800	2600	6.31
<b>32222</b>	110	200	56	53	46	3.5	2	430	668	1700	2400	7.43
<b>32224</b>	120	215	61.5	58	50	3	2.5	475	764	1600	2200	9.26
<b>32226</b>	130	230	67.75	64	54	4	3	549	895	1500	2000	11.5
<b>32228</b>	140	250	71.75	68	58	4	3	640	1060	1400	1900	14.4
<b>32230</b>	150	270	77	73	60	4	3	718	1190	1200	1700	18.2
<b>32232</b>	160	290	84	80	67	4	3	852	1440	1000	1400	21.1
<b>32234</b>	170	310	91	86	71	5	4	1010	1630	1000	1500	28.5
<b>32236</b>	180	320	91	86	71	5	4	998	1720	950	1400	29.8
<b>32238</b>	190	340	97	92	75	5	4	1110	1920	900	1300	36
<b>32240</b>	200	360	104	98	82	5	4	1210	2000	900	1300	42.7
<b>32244</b>	220	400	115	108	90	5	4	1530	2560	800	1100	58.3

<b>32303</b>	17	47	20.25	19	16	1	1	35.4	36.6	8000	11000	0.174
<b>32304</b>	20	52	22.25	21	18	1.5	1.5	42.7	46.4	7500	10000	0.231
<b>32305</b>	25	62	25.25	24	20	1.5	1.5	61.7	68.9	6000	8000	0.367

32306	30	72	28.75	27	23	1.5	1.5	81.7	97.6	5300	7000	0.56
32307	35	80	32.75	31	25	2	1.5	99.1	119	4800	6300	0.77
32308	40	90	35.25	33	27	2	1.5	115	149	4000	5300	1.05
32309	45	100	38.25	36	30	2	1.5	145	191	3600	4800	1.4
32310	50	110	42.25	40	33	2.5	2	177	239	3200	4300	1.89
32311	55	120	45.5	43	35	2.5	2	203	274	3000	4000	2.37
32312	60	130	48.5	46	37	3	2.5	226	306	2600	3600	2.9
32313	65	140	51	48	39	3	2.5	259	353	2400	3400	3.51
32314	70	150	54	51	42	3	2.5	298	413	2000	3000	4.35
32315	75	160	58	55	45	3	2.5	346	488	2000	3000	5.34
32316	80	170	61.5	58	48	3	2.5	387	549	1900	2800	6.38
32317	85	180	63.5	60	49	4	3	421	599	1800	2600	7.3
32318	90	190	67.5	64	53	4	3	477	690	1700	2400	8.78
32319	95	200	71.5	67	55	4	3	515	745	1700	2400	10.7
32320	100	215	77.5	73	60	4	3	572	780	1600	2200	3
32321	105	225	81.5	77	63	4	3	646	955	1500	2000	14.5
32322	110	240	84.5	80	65	4	3	722	1070	1400	1900	17.8
32324	120	260	90.5	86	69	4	3	824	1240	1300	1800	21.7
32334	170	360	128	120	100	3.7	1.3	1300	1760	850	1100	59.5

33005	25	47	17	17	14	0.6	0.6	27.5	37	8000	10700	0.131
33006	30	55	20	20	16	1	1	39.5	59.5	6700	9100	0.208
33007	35	62	21	21	17	1	1	51.3	68	6200	8200	0.267
33008	40	68	22	22	18	1	1	60.4	84.6	5500	7400	0.322
33009	45	75	24	24	19	1	1	69.6	101	5000	6700	0.414
33010	50	80	24	24	19	1	1	73	110	4600	6100	0.452
33011	55	90	27	27	21	1.5	1.5	96.5	145	4100	5400	0.672
33012	60	95	27	27	21	1.5	1.5	101	162	3900	5200	0.713
33013	65	100	27	27	21	1.5	1.5	103	169	3600	4800	0.758
33014	70	110	31	31	25.5	1.5	1.5	134	208	3300	4400	1.11
33015	75	115	31	31	25.5	1.5	1.5	141	225	3200	4200	1.18
33019	95	145	39	39	32.5	2	1.5	226	382	2500	3300	2.3
33022	110	170	47	47	37	2.5	2	287	502	2100	2800	3.775

33205	25	52	22	22	18	1	1	47.3	56	6700	9000	0.23
33206	30	62	25	25	19.5	1	1	64.4	76.5	5600	7500	0.37
33207	35	72	28	28	22	1.5	1.5	84.2	106	4800	6300	0.522
33208	40	80	32	32	25	1.5	1.5	105	132	4300	5600	0.535
33209	45	85	32	32	24.5	1.5	1.5	108	143	4000	5300	0.82
33210	50	90	32	32	24.5	1.5	1.5	114	160	3800	5000	0.9
33211	55	100	35	35	27	2	1.5	138	190	3400	4500	1.2
33212	60	110	38	38	29	2	1.5	168	250	3000	4000	1.6
33213	65	120	41	41	32	2	1.5	194	270	2800	3800	2.05
33214	70	125	41	41	32	2	1.5	201	285	2600	3600	2.1

33215	75	130	41	41	31	2	1.5	209	300	2400	3400	2.25
33216	80	140	46	46	35	2.5	2	251	375	2200	3200	2.9
33217	85	150	49	49	37	2.5	2	286	430	2000	3000	3.7
33220	100	180	63	63	48	3	2.5	429	655	1700	2400	6.78

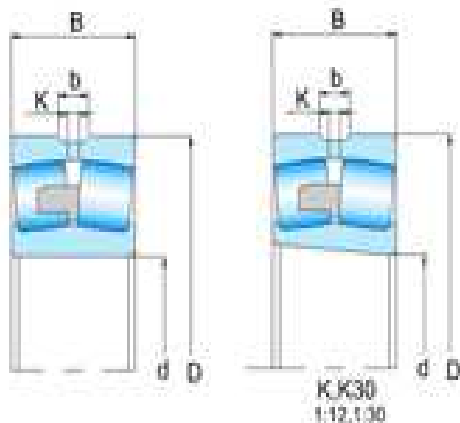


[www.sks-bearing.com](http://www.sks-bearing.com)

**SKS BEARING**  
47807 Krefeld, Germany

Tel: +49-17621845243; Fax: +49-21514869900

## SPHERICAL ROLLER BEARING



Bearing No.	Boundary dimensions				Basic load ratings(kN)		Limiting speeds		Mass
	mm				Dynamic	Static	rpm		Kg
	d	D	B	r <sub>s min</sub>	Cr	Cor	Grease	Oil	≈
22205	25	52	18	1	36.5	36	6,500	10,000	0.186
22205K	25	52	18	1	36.5	36	6,500	10,000	0.182
22205KW33C3	25	52	18	1	36.5	36	6,500	10,000	0.182
22205W33C3	25	52	18	1	36.5	36	6,500	10,000	0.186
22206	30	62	20	1	49	49	5,700	8,800	0.287
22206K	30	62	20	1	49	49	5,700	8,800	0.282
22206KW33C3	30	62	20	1	49	49	5,700	8,800	0.282
22206W33C3	30	62	20	1	49	49	5,700	8,800	0.287
22207	35	72	23	1.1	69.5	71	4,900	7,500	0.446

22207K	35	72	23	1.1	69.5	71	4,900	7,500	0.437
22207KW33C3	35	72	23	1.1	69.5	71	4,900	7,500	0.437
22207W33C3	35	72	23	1.1	69.5	71	4,900	7,500	0.446
22208	40	80	23	1.1	79	88.5	4,300	6,600	0.526
22208K	40	80	23	1.1	79	88.5	4,300	6,600	0.515
22208KW33C3	40	80	23	1.1	79	88.5	4,300	6,600	0.515
22208W33C3	40	80	23	1.1	79	88.5	4,300	6,600	0.526
22209	45	85	23	1.1	82.5	95	3,800	5,900	0.584
22209K	45	85	23	1.1	82.5	95	3,800	5,900	0.572
22209KW33C3	45	85	23	1.1	82.5	95	3,800	5,900	0.572
22209W33C3	45	85	23	1.1	82.5	95	3,800	5,900	0.584
22210	50	90	23	1.1	86	102	3,500	5,300	0.63
22210K	50	90	23	1.1	86	102	3,500	5,300	0.616
22210KW33C3	50	90	23	1.1	86	102	3,500	5,300	0.616
22210W33C3	50	90	23	1.1	86	102	3,500	5,300	0.63
22211	55	100	25	1.5	118	144	3,200	4,900	0.808
22211K	55	100	25	1.5	118	144	3,200	4,900	0.79
22211KW33C3	55	100	25	1.5	93.5	110	3,200	4,200	0.832
22211W33C3	55	100	25	1.5	118	144	3,200	4,900	0.808
22212	60	110	28	1.5	115	147	2,900	4,500	1.15
22212K	60	110	28	1.5	115	147	2,900	4,500	1.13
22212KW33C3	60	110	28	1.5	115	147	2,900	4,500	1.13
22212W33C3	60	110	28	1.5	115	147	2,900	4,500	1.15
22213	65	120	31	1.5	143	179	2,700	4,200	1.5
22213K	65	120	31	1.5	143	179	2,700	4,200	1.47
22213KW33C3	65	120	31	1.5	143	179	2,700	4,200	1.47
22213W33C3	65	120	31	1.5	143	179	2,700	4,200	1.5
22214	70	125	31	1.5	154	201	2,500	3,900	1.55
22214K	70	125	31	1.5	154	201	2,500	3,900	1.52
22214KW33C3	70	125	31	1.5	154	201	2,500	3,900	1.52
22214W33C3	70	125	31	1.5	154	201	2,500	3,900	1.55
22215	75	130	31	1.5	166	223	2,300	3,600	1.65
22215K	75	130	31	1.5	166	223	2,300	3,600	1.61
22215KW33C3	75	130	31	1.5	166	223	2,300	3,600	1.61
22215W33C3	75	130	31	1.5	166	223	2,300	3,600	1.65
22216	80	140	33	2	213	277	2,200	3,400	1.99
22216K	80	140	33	2	213	277	2,200	3,400	1.94
22216KW33C3	80	140	33	2	213	277	2,200	3,400	1.94
22216W33C3	80	140	33	2	213	277	2,200	3,400	1.99
22217	85	150	36	2	251	320	2,100	3,200	2.49
22217K	85	150	36	2	251	320	2,100	3,200	2.43
22217KW33C3	85	150	36	2	251	320	2,100	3,200	2.43
22217W33C3	85	150	36	2	251	320	2,100	3,200	2.49

22218	90	160	40	2	292	385	1,900	3,000	3.24
22218K	90	160	40	2	292	385	1,900	3,000	3.16
22218KW33C3	90	160	40	2	292	385	1,900	3,000	3.16
22218W33C3	90	160	40	2	292	385	1,900	3,000	3.24
22219	95	170	43	2.1	294	390	1,800	2,800	4.1
22219K	95	170	43	2.1	294	390	1,800	2,800	4.01
22219KW33C3	95	170	43	2.1	294	390	1,800	2,800	4.01
22219W33C3	95	170	43	2.1	294	390	1,800	2,800	4.1
22220	100	180	46	2.1	315	415	1,700	2,700	4.95
22220K	100	180	46	2.1	315	415	1,700	2,700	4.84
22220KW33C3	100	180	46	2.1	315	415	1,700	2,700	4.84
22220W33C3	100	180	46	2.1	315	415	1,700	2,700	4.95
22222	110	200	53	2.1	410	570	1,600	2,400	7.2
22222K	110	200	53	2.1	410	570	1,600	2,400	7.04
22222KW33C3	110	200	53	2.1	410	570	1,600	2,400	7.04
22222W33C3	110	200	53	2.1	410	570	1,600	2,400	7.2
22224	120	215	58	2.1	485	700	1,400	2,200	9.1
22224K	120	215	58	2.1	485	700	1,400	2,200	8.89
22224KW33C3	120	215	58	2.1	485	700	1,400	2,200	8.89
22224W33C3	120	215	58	2.1	485	700	1,400	2,200	9.1
22226	130	230	64	3	570	790	1,300	2,000	11.2
22226K	130	230	64	3	570	790	1,300	2,000	10.9
22226KW33C3	130	230	64	3	570	790	1,300	2,000	10.9
22226W33C3	130	230	64	3	570	790	1,300	2,000	11.2
22228	140	250	68	3	685	975	1,200	1,900	14
22228K	140	250	68	3	685	975	1,200	1,900	13.7
22228KW33C3	140	250	68	3	685	975	1,200	1,900	13.7
22228W33C3	140	250	68	3	685	975	1,200	1,900	14
22230	150	270	73	3	775	1,160	1,100	1,700	18.1
22230K	150	270	73	3	775	1,160	1,100	1,700	17.7
22230KW33C3	150	270	73	3	775	1,160	1,100	1,700	17.7
22230W33C3	150	270	73	3	775	1,160	1,100	1,700	18.1
22232	160	290	80	3	870	1,290	1,000	1,600	22.7
22232K	160	290	80	3	870	1,290	1,000	1,600	22.2
22232KW33C3	160	290	80	3	870	1,290	1,000	1,600	22.2
22232W33C3	160	290	80	3	870	1,290	1,000	1,600	22.7
22234	170	310	86	4	1,000	1,520	980	1,500	28
22234K	170	310	86	4	1,000	1,520	980	1,500	27.3
22234KW33C3	170	310	86	4	1,000	1,520	980	1,500	27.3
22234W33C3	170	310	86	4	1,000	1,520	980	1,500	28
22236	180	320	86	4	1,040	1,610	920	1,400	29.3
22236K	180	320	86	4	1,040	1,610	920	1,400	28.6
22236KW33C3	180	320	86	4	1,040	1,610	920	1,400	28.6



<b>22236W33C3</b>	180	320	86	4	1,040	1,610	920	1,400	29.3
<b>22238</b>	190	340	92	4	1,160	1,810	860	1,300	36.6
<b>22238K</b>	190	340	92	4	1,160	1,810	860	1,300	35.8
<b>22238KW33C3</b>	190	340	92	4	1,160	1,810	860	1,300	35.8
<b>22238W33C3</b>	190	340	92	4	1,160	1,810	860	1,300	36.6
<b>22240</b>	200	360	98	4	1,310	2,010	820	1,300	44
<b>22240K</b>	200	360	98	4	1,310	2,010	820	1,300	43
<b>22240KW33C3</b>	200	360	98	4	1,310	2,010	820	1,300	43
<b>22240W33C3</b>	200	360	98	4	1,310	2,010	820	1,300	44
<b>22244</b>	220	400	108	4	1,580	2,460	730	1,100	60.4
<b>22244K</b>	220	400	108	4	1,580	2,460	730	1,100	59.1
<b>22244KW33C3</b>	220	400	108	4	1,580	2,460	730	1,100	59.1
<b>22244W33C3</b>	220	400	108	4	1,580	2,460	730	1,100	60.4
<b>22248</b>	240	440	120	4	1,940	3,100	660	1,000	81.7
<b>22248K</b>	240	440	120	4	1,940	3,100	660	1,000	80
<b>22248KW33C3</b>	240	440	120	4	1,940	3,100	660	1,000	80
<b>22248W33C3</b>	240	440	120	4	1,940	3,100	660	1,000	81.7
<b>22252</b>	260	480	130	5	2,230	3,600	610	930	106
<b>22252K</b>	260	480	130	5	2,230	3,600	610	930	104
<b>22252KW33C3</b>	260	480	130	5	2,230	3,600	610	930	104
<b>22252W33C3</b>	260	480	130	5	2,230	3,600	610	930	106
<b>22256</b>	280	500	130	5	2,310	3,800	560	860	112
<b>22256K</b>	280	500	130	5	2,310	3,800	560	860	110
<b>22256KW33C3</b>	280	500	130	5	2,310	3,800	560	860	110
<b>22256W33C3</b>	280	500	130	5	2,310	3,800	560	860	112
<b>22260</b>	300	540	140	5	2,670	4,350	510	790	141
<b>22260K</b>	300	540	140	5	2,670	4,350	510	790	138
<b>22260KW33C3</b>	300	540	140	5	2,670	4,350	510	790	138
<b>22260W33C3</b>	300	540	140	5	2,670	4,350	510	790	141
<b>22308</b>	40	90	33	1.5	121	128	3,800	5,900	0.974
<b>22308K</b>	40	90	33	1.5	121	128	3,800	5,900	0.951
<b>22308KW33C3</b>	40	90	33	1.5	121	128	3,800	5,900	0.951
<b>22308W33C3</b>	40	90	33	1.5	121	128	3,800	5,900	0.974
<b>22309</b>	45	100	36	1.5	148	167	3,400	5,300	1.33
<b>22309K</b>	45	100	36	1.5	148	167	3,400	5,300	1.3
<b>22309KW33C3</b>	45	100	36	1.5	148	167	3,400	5,300	1.3
<b>22309W33C3</b>	45	100	36	1.5	148	167	3,400	5,300	1.33
<b>22310</b>	50	110	40	2	186	212	3,100	4,800	1.79
<b>22310K</b>	50	110	40	2	186	212	3,100	4,800	1.75
<b>22310KW33C3</b>	50	110	40	2	186	212	3,100	4,800	1.75
<b>22310W33C3</b>	50	110	40	2	186	212	3,100	4,800	1.79
<b>22311</b>	55	120	43	2	204	234	2,800	4,400	2.3

22311K	55	120	43	2	204	234	2,800	4,400	2.25
22311KW33C3	55	120	43	2	204	234	2,800	4,400	2.25
22311W33C3	55	120	43	2	204	234	2,800	4,400	2.3
22312	60	130	46	2.1	238	273	2,600	4,000	2.9
22312K	60	130	46	2.1	238	273	2,600	4,000	2.83
22312KW33C3	60	130	46	2.1	238	273	2,600	4,000	2.83
22312W33C3	60	130	46	2.1	238	273	2,600	4,000	2.9
22313	65	140	48	2.1	265	320	2,400	3,700	3.45
22313K	65	140	48	2.1	265	320	2,400	3,700	3.37
22313KW33C3	65	140	48	2.1	265	320	2,400	3,700	3.37
22313W33C3	65	140	48	2.1	265	320	2,400	3,700	3.45
22314	70	150	51	2.1	325	380	2,300	3,500	4.22
22314K	70	150	51	2.1	325	380	2,300	3,500	4.12
22314KW33C3	70	150	51	2.1	325	380	2,300	3,500	4.12
22314W33C3	70	150	51	2.1	325	380	2,300	3,500	4.22
22315	75	160	55	2.1	330	410	2,100	3,200	5.25
22315K	75	160	55	2.1	330	410	2,100	3,200	5.13
22315KW33C3	75	160	55	2.1	330	410	2,100	3,200	5.13
22315W33C3	75	160	55	2.1	330	410	2,100	3,200	5.25
22316	80	170	58	2.1	385	470	2,000	3,000	6.05
22316K	80	170	58	2.1	385	470	2,000	3,000	5.91
22316KW33C3	80	170	58	2.1	385	470	2,000	3,000	5.91
22316W33C3	80	170	58	2.1	385	470	2,000	3,000	6.05
22317	85	180	60	3	415	510	1,900	2,900	7.1
22317K	85	180	60	3	415	510	1,900	2,900	6.94
22317KW33C3	85	180	60	3	415	510	1,900	2,900	6.94
22317W33C3	85	180	60	3	415	510	1,900	2,900	7.1
22318	90	190	64	3	480	590	1,800	2,700	8.35
22318K	90	190	64	3	480	590	1,800	2,700	8.16
22318KW33C3	90	190	64	3	480	590	1,800	2,700	8.16
22318W33C3	90	190	64	3	480	590	1,800	2,700	8.35
22319	95	200	67	3	500	615	1,600	2,500	9.76
22319K	95	200	67	3	500	615	1,600	2,500	9.54
22319KW33C3	95	200	67	3	500	615	1,600	2,500	9.54
22319W33C3	95	200	67	3	500	615	1,600	2,500	9.76
22320	100	215	73	3	605	755	1,600	2,400	12.4
22320K	100	215	73	3	605	755	1,600	2,400	12.1
22320KW33C3	100	215	73	3	605	755	1,600	2,400	12.1
22320W33C3	100	215	73	3	605	755	1,600	2,400	12.4
22322	110	240	80	3	745	930	1,400	2,200	17.1
22322K	110	240	80	3	745	930	1,400	2,200	16.7
22322KW33C3	110	240	80	3	745	930	1,400	2,200	16.7
22322W33C3	110	240	80	3	745	930	1,400	2,200	17.1

22324	120	260	86	3	880	1,120	1,300	2,000	21.5
22324K	120	260	86	3	880	1,120	1,300	2,000	21
22324KW33C3	120	260	86	3	880	1,120	1,300	2,000	21
22324W33C3	120	260	86	3	880	1,120	1,300	2,000	21.5
22326	130	280	93	4	1,000	1,290	1,200	1,800	26.8
22326K	130	280	93	4	1,000	1,290	1,200	1,800	26.2
22326KW33C3	130	280	93	4	1,000	1,290	1,200	1,800	26.2
22326W33C3	130	280	93	4	1,000	1,290	1,200	1,800	26.8
22328	140	300	102	4	1,130	1,460	1,100	1,700	33.8
22328K	140	300	102	4	1,130	1,460	1,100	1,700	33
22328KW33C3	140	300	102	4	1,130	1,460	1,100	1,700	33
22328W33C3	140	300	102	4	1,130	1,460	1,100	1,700	33.8
22330	150	320	108	4	1,270	1,750	1,000	1,600	42.7
22330K	150	320	108	4	1,270	1,750	1,000	1,600	41.8
22330KW33C3	150	320	108	4	1,270	1,750	1,000	1,600	41.8
22330W33C3	150	320	108	4	1,270	1,750	1,000	1,600	42.7
22332	160	340	114	4	1,410	1,990	940	1,500	50.8
22332K	160	340	114	4	1,410	1,990	940	1,500	49.7
22332KW33C3	160	340	114	4	1,410	1,990	940	1,500	49.7
22332W33C3	160	340	114	4	1,410	1,990	940	1,500	50.8
22334	170	360	120	4	1,540	2,180	880	1,400	59.8
22334K	170	360	120	4	1,540	2,180	880	1,400	58.5
22334KW33C3	170	360	120	4	1,540	2,180	880	1,400	58.5
22334W33C3	170	360	120	4	1,540	2,180	880	1,400	59.8
22336	180	380	126	4	1,740	2,560	830	1,300	70
22336K	180	380	126	4	1,740	2,560	830	1,300	68.5
22336KW33C3	180	380	126	4	1,740	2,560	830	1,300	68.5
22336W33C3	180	380	126	4	1,740	2,560	830	1,300	70
22338	190	400	132	5	1,870	2,790	780	1,200	81
22338K	190	400	132	5	1,870	2,790	780	1,200	79.3
22338KW33C3	190	400	132	5	1,870	2,790	780	1,200	79.3
22338W33C3	190	400	132	5	1,870	2,790	780	1,200	81
22340	200	420	138	5	2,040	3,050	740	1,100	93.2
22340K	200	420	138	5	2,040	3,050	740	1,100	91.2
22340KW33C3	200	420	138	5	2,040	3,050	740	1,100	91.2
22340W33C3	200	420	138	5	2,040	3,050	740	1,100	93.2
22344	220	460	145	5	2,350	3,500	660	1,000	117
22344K	220	460	145	5	2,350	3,500	660	1,000	115
22344KW33C3	220	460	145	5	2,350	3,500	660	1,000	115
22344W33C3	220	460	145	5	2,350	3,500	660	1,000	117
22348	240	500	155	5	2,720	4,100	600	930	148
22348K	240	500	155	5	2,720	4,100	600	930	145
22348KW33C3	240	500	155	5	2,720	4,100	600	930	145

<b>22348W33C3</b>	240	500	155	5	2,720	4,100	600	930	148
<b>22352</b>	260	540	165	6	3,100	4,750	550	850	183
<b>22352K</b>	260	540	165	6	3,100	4,750	550	850	179
<b>22352KW33C3</b>	260	540	165	6	3,100	4,750	550	850	179
<b>22352W33C3</b>	260	540	165	6	3,100	4,750	550	850	183
<b>22356</b>	280	580	175	6	3,500	5,350	500	780	224
<b>22356K</b>	280	580	175	6	3,500	5,350	500	780	220
<b>22356KW33C3</b>	280	580	175	6	3,500	5,350	500	780	220
<b>22356W33C3</b>	280	580	175	6	3,500	5,350	500	780	224
<b>22360</b>	300	620	185	7.5	3,600	5,400	470	720	270
<b>22360K</b>	300	620	185	7.5	3,600	5,400	470	720	265
<b>22360KW33C3</b>	300	620	185	7.5	3,600	5,400	470	720	265
<b>22360W33C3</b>	300	620	185	7.5	3,600	5,400	470	720	270
<b>23022</b>	110	170	45	2	282	455	1,800	2,800	3.71
<b>23022K</b>	110	170	45	2	282	455	1,800	2,800	3.58
<b>23022KW33C3</b>	110	170	45	2	282	455	1,800	2,800	3.58
<b>23022W33C3</b>	110	170	45	2	282	455	1,800	2,800	3.71
<b>23024</b>	120	180	46	2	296	495	1,700	2,600	4.05
<b>23024K</b>	120	180	46	2	296	495	1,700	2,600	3.9
<b>23024KW33C3</b>	120	180	46	2	296	495	1,700	2,600	3.9
<b>23024W33C3</b>	120	180	46	2	296	495	1,700	2,600	4.05
<b>23026</b>	130	200	52	2	375	620	1,500	2,300	5.9
<b>23026K</b>	130	200	52	2	375	620	1,500	2,300	5.69
<b>23026KW33C3</b>	130	200	52	2	375	620	1,500	2,300	5.69
<b>23026W33C3</b>	130	200	52	2	375	620	1,500	2,300	5.9
<b>23028</b>	140	210	53	2	405	690	1,400	2,200	6.35
<b>23028K</b>	140	210	53	2	405	690	1,400	2,200	6.12
<b>23028KW33C3</b>	140	210	53	2	405	690	1,400	2,200	6.12
<b>23028W33C3</b>	140	210	53	2	405	690	1,400	2,200	6.35
<b>23030</b>	150	225	56	2.1	445	775	1,300	2,000	7.73
<b>23030K</b>	150	225	56	2.1	445	775	1,300	2,000	7.45
<b>23030KW33C3</b>	150	225	56	2.1	445	775	1,300	2,000	7.45
<b>23030W33C3</b>	150	225	56	2.1	445	775	1,300	2,000	7.73
<b>23032</b>	160	240	60	2.1	505	885	1,200	1,900	9.42
<b>23032K</b>	160	240	60	2.1	505	885	1,200	1,900	9.09
<b>23032KW33C3</b>	160	240	60	2.1	505	885	1,200	1,900	9.09
<b>23032W33C3</b>	160	240	60	2.1	505	885	1,200	1,900	9.42
<b>23034</b>	170	260	67	2.1	630	1,080	1,100	1,800	12.7
<b>23034K</b>	170	260	67	2.1	630	1,080	1,100	1,800	12.3
<b>23034KW33C3</b>	170	260	67	2.1	630	1,080	1,100	1,800	12.3
<b>23034W33C3</b>	170	260	67	2.1	630	1,080	1,100	1,800	12.7
<b>23036</b>	180	280	74	2.1	740	1,290	1,100	1,700	16.7

<b>23036K</b>	180	280	74	2.1	740	1,290	1,100	1,700	16.1
<b>23036KW33C3</b>	180	280	74	2.1	740	1,290	1,100	1,700	16.1
<b>23036W33C3</b>	180	280	74	2.1	740	1,290	1,100	1,700	16.7
<b>23038</b>	190	290	75	2.1	755	1,350	1,000	1,600	17.7
<b>23038K</b>	190	290	75	2.1	755	1,350	1,000	1,600	17.1
<b>23038KW33C3</b>	190	290	75	2.1	755	1,350	1,000	1,600	17.1
<b>23038W33C3</b>	190	290	75	2.1	755	1,350	1,000	1,600	17.7
<b>23040</b>	200	310	82	2.1	915	1,620	960	1,500	22.7
<b>23040K</b>	200	310	82	2.1	915	1,620	960	1,500	21.9
<b>23040KW33C3</b>	200	310	82	2.1	915	1,620	960	1,500	21.9
<b>23040W33C3</b>	200	310	82	2.1	915	1,620	960	1,500	22.7
<b>23044</b>	220	340	90	3	1,060	1,920	870	1,300	29.9
<b>23044K</b>	220	340	90	3	1,060	1,920	870	1,300	28.8
<b>23044KW33C3</b>	220	340	90	3	1,060	1,920	870	1,300	28.8
<b>23044W33C3</b>	220	340	90	3	1,060	1,920	870	1,300	29.9
<b>23048</b>	240	360	92	3	1,130	2,140	790	1,200	33.4
<b>23048K</b>	240	360	92	3	1,130	2,140	790	1,200	32.2
<b>23048KW33C3</b>	240	360	92	3	1,130	2,140	790	1,200	32.2
<b>23048W33C3</b>	240	360	92	3	1,130	2,140	790	1,200	33.4
<b>23052</b>	260	400	104	4	1,420	2,620	720	1,100	48.5
<b>23052K</b>	260	400	104	4	1,420	2,620	720	1,100	46.8
<b>23052KW33C3</b>	260	400	104	4	1,420	2,620	720	1,100	46.8
<b>23052W33C3</b>	260	400	104	4	1,420	2,620	720	1,100	48.5
<b>23056</b>	280	420	106	4	1,510	2,920	660	1,000	52.4
<b>23056K</b>	280	420	106	4	1,510	2,920	660	1,000	50.6
<b>23056KW33C3</b>	280	420	106	4	1,510	2,920	660	1,000	50.6
<b>23056W33C3</b>	280	420	106	4	1,510	2,920	660	1,000	52.4
<b>23060</b>	300	460	118	4	1,890	3,550	610	940	72.4
<b>23060K</b>	300	460	118	4	1,890	3,550	610	940	70.2
<b>23060KW33C3</b>	300	460	118	4	1,890	3,550	610	940	70.2
<b>23060W33C3</b>	300	460	118	4	1,890	3,550	610	940	72.4
<b>23120</b>	100	165	52	2	310	470	1,700	2,600	4.3
<b>23120K</b>	100	165	52	2	310	470	1,700	2,600	4.16
<b>23120KW33C3</b>	100	165	52	2	310	470	1,700	2,600	4.16
<b>23120W33C3</b>	100	165	52	2	310	470	1,700	2,600	4.3
<b>23122</b>	110	180	56	2	370	580	1,500	2,400	5.4
<b>23122K</b>	110	180	56	2	370	580	1,500	2,400	5.22
<b>23122KW33C3</b>	110	180	56	2	370	580	1,500	2,400	5.22
<b>23122W33C3</b>	110	180	56	2	370	580	1,500	2,400	5.4
<b>23124</b>	120	200	62	2	455	705	1,400	2,100	7.7
<b>23124K</b>	120	200	62	2	455	705	1,400	2,100	7.46
<b>23124KW33C3</b>	120	200	62	2	455	705	1,400	2,100	7.46

23124W33C3	120	200	62	2	455	705	1,400	2,100	7.7
23126	130	210	64	2	495	795	1,300	2,000	8.47
23126K	130	210	64	2	495	795	1,300	2,000	8.2
23126KW33C3	130	210	64	2	495	795	1,300	2,000	8.2
23126W33C3	130	210	64	2	495	795	1,300	2,000	8.47
23128	140	225	68	2.1	540	895	1,200	1,800	10.2
23128K	140	225	68	2.1	540	895	1,200	1,800	9.86
23128KW33C3	140	225	68	2.1	540	895	1,200	1,800	9.86
23128W33C3	140	225	68	2.1	540	895	1,200	1,800	10.2
23130	150	250	80	2.1	730	1,190	1,100	1,700	15.6
23130K	150	250	80	2.1	730	1,190	1,100	1,700	15.1
23130KW33C3	150	250	80	2.1	730	1,190	1,100	1,700	15.1
23130W33C3	150	250	80	2.1	730	1,190	1,100	1,700	15.6
23132	160	270	86	2.1	840	1,370	1,000	1,600	19.8
23132K	160	270	86	2.1	840	1,370	1,000	1,600	19.2
23132KW33C3	160	270	86	2.1	840	1,370	1,000	1,600	19.2
23132W33C3	160	270	86	2.1	840	1,370	1,000	1,600	19.8
23134	170	280	88	2.1	885	1,490	960	1,500	21.5
23134K	170	280	88	2.1	885	1,490	960	1,500	20.8
23134KW33C3	170	280	88	2.1	885	1,490	960	1,500	20.8
23134W33C3	170	280	88	2.1	885	1,490	960	1,500	21.5
23136	180	300	96	3	1,030	1,730	900	1,400	25.1
23136K	180	300	96	3	1,030	1,730	900	1,400	24.2
23136KW33C3	180	300	96	3	1,030	1,730	900	1,400	24.2
23136W33C3	180	300	96	3	1,030	1,730	900	1,400	25.1
23138	190	320	104	3	1,190	2,020	850	1,300	35.3
23138K	190	320	104	3	1,190	2,020	850	1,300	34.2
23138KW33C3	190	320	104	3	1,190	2,020	850	1,300	34.2
23138W33C3	190	320	104	3	1,190	2,020	850	1,300	35.3
23140	200	340	112	3	1,350	2,270	800	1,200	43.3
23140K	200	340	112	3	1,350	2,270	800	1,200	42
23140KW33C3	200	340	112	3	1,350	2,270	800	1,200	42
23140W33C3	200	340	112	3	1,350	2,270	800	1,200	43.3
23144	220	370	120	4	1,540	2,670	720	1,100	53.3
23144K	220	370	120	4	1,540	2,670	720	1,100	51.6
23144KW33C3	220	370	120	4	1,540	2,670	720	1,100	51.6
23144W33C3	220	370	120	4	1,540	2,670	720	1,100	53.3
23148	240	400	128	4	1,730	3,050	650	1,000	65.8
23148K	240	400	128	4	1,730	3,050	650	1,000	63.8
23148KW33C3	240	400	128	4	1,730	3,050	650	1,000	63.8
23148W33C3	240	400	128	4	1,730	3,050	650	1,000	65.8
23152	260	440	144	4	2,140	3,850	600	920	91.4
23152K	260	440	144	4	2,140	3,850	600	920	88.6

<b>23152KW33C3</b>	260	440	144	4	2,140	3,850	600	920	88.6
<b>23152W33C3</b>	260	440	144	4	2,140	3,850	600	920	91.4
<b>23156</b>	280	460	146	5	2,300	4,250	550	850	97.7
<b>23156K</b>	280	460	146	5	2,300	4,250	550	850	94.6
<b>23156KW33C3</b>	280	460	146	5	2,300	4,250	550	850	94.6
<b>23156W33C3</b>	280	460	146	5	2,300	4,250	550	850	97.7
<b>23160</b>	300	500	160	5	2,750	5,000	510	780	131
<b>23160K</b>	300	500	160	5	2,750	5,000	510	780	127
<b>23160KW33C3</b>	300	500	160	5	2,750	5,000	510	780	127
<b>23160W33C3</b>	300	500	160	5	2,750	5,000	510	780	131
<b>23218</b>	90	160	52.4	2	315	455	1,800	2,800	4.45
<b>23218K</b>	90	160	52.4	2	315	455	1,800	2,800	4.32
<b>23218KW33C3</b>	90	160	52.4	2	315	455	1,800	2,800	4.32
<b>23218W33C3</b>	90	160	52.4	2	315	455	1,800	2,800	4.45
<b>23220</b>	100	180	60.3	2.1	405	580	1,600	2,500	6.47
<b>23220K</b>	100	180	60.3	2.1	405	580	1,600	2,500	6.28
<b>23220KW33C3</b>	100	180	60.3	2.1	405	580	1,600	2,500	6.28
<b>23220W33C3</b>	100	180	60.3	2.1	405	580	1,600	2,500	6.47
<b>23222</b>	110	200	69.8	2.1	515	760	1,400	2,200	9.71
<b>23222K</b>	110	200	69.8	2.1	515	760	1,400	2,200	9.43
<b>23222KW33C3</b>	110	200	69.8	2.1	515	760	1,400	2,200	9.43
<b>23222W33C3</b>	110	200	69.8	2.1	515	760	1,400	2,200	9.71
<b>23224</b>	120	215	76	2.1	585	880	1,300	2,000	12.1
<b>23224K</b>	120	215	76	2.1	585	880	1,300	2,000	11.7
<b>23224KW33C3</b>	120	215	76	2.1	585	880	1,300	2,000	11.7
<b>23224W33C3</b>	120	215	76	2.1	585	880	1,300	2,000	12.1
<b>23226</b>	130	230	80	3	685	1,060	1,200	1,900	14.3
<b>23226K</b>	130	230	80	3	685	1,060	1,200	1,900	13.9
<b>23226KW33C3</b>	130	230	80	3	685	1,060	1,200	1,900	13.9
<b>23226W33C3</b>	130	230	80	3	685	1,060	1,200	1,900	14.3
<b>23228</b>	140	250	88	3	805	1,270	1,100	1,700	18.8
<b>23228K</b>	140	250	88	3	805	1,270	1,100	1,700	18.2
<b>23228KW33C3</b>	140	250	88	3	805	1,270	1,100	1,700	18.2
<b>23228W33C3</b>	140	250	88	3	805	1,270	1,100	1,700	18.8
<b>23230</b>	150	270	96	3	935	1,460	1,000	1,600	24.1
<b>23230K</b>	150	270	96	3	935	1,460	1,000	1,600	23.4
<b>23230KW33C3</b>	150	270	96	3	935	1,460	1,000	1,600	23.4
<b>23230W33C3</b>	150	270	96	3	935	1,460	1,000	1,600	24.1
<b>23232</b>	160	290	104	3	1,050	1,660	960	1,500	30
<b>23232K</b>	160	290	104	3	1,050	1,660	960	1,500	29.1
<b>23232KW33C3</b>	160	290	104	3	1,050	1,660	960	1,500	29.1
<b>23232W33C3</b>	160	290	104	3	1,050	1,660	960	1,500	30

23234	170	310	110	4	1,180	1,960	910	1,400	36.8
23234K	170	310	110	4	1,180	1,960	910	1,400	35.7
23234KW33C3	170	310	110	4	1,180	1,960	910	1,400	35.7
23234W33C3	170	310	110	4	1,180	1,960	910	1,400	36.8
23236	180	320	112	4	1,230	2,000	850	1,300	39
23236K	180	320	112	4	1,230	2,000	850	1,300	37.8
23236KW33C3	180	320	112	4	1,230	2,000	850	1,300	37.8
23236W33C3	180	320	112	4	1,230	2,000	850	1,300	39
23238	190	340	120	4	1,400	2,330	790	1,200	47.6
23238K	190	340	120	4	1,400	2,330	790	1,200	46.2
23238KW33C3	190	340	120	4	1,400	2,330	790	1,200	46.2
23238W33C3	190	340	120	4	1,400	2,330	790	1,200	47.6
23240	200	360	128	4	1,610	2,640	750	1,200	57.2
23240K	200	360	128	4	1,610	2,640	750	1,200	55.5
23240KW33C3	200	360	128	4	1,610	2,640	750	1,200	55.5
23240W33C3	200	360	128	4	1,610	2,640	750	1,200	57.2
23244	220	400	144	4	2,010	3,350	670	1,000	80
23244K	220	400	144	4	2,010	3,350	670	1,000	77.6
23244KW33C3	220	400	144	4	2,010	3,350	670	1,000	77.6
23244W33C3	220	400	144	4	2,010	3,350	670	1,000	80
23248	240	440	160	4	2,430	4,100	610	940	108
23248K	240	440	160	4	2,430	4,100	610	940	105
23248KW33C3	240	440	160	4	2,430	4,100	610	940	105
23248W33C3	240	440	160	4	2,430	4,100	610	940	108
23252	260	480	174	5	2,760	4,700	560	860	141
23252K	260	480	174	5	2,760	4,700	560	860	137
23252KW33C3	260	480	174	5	2,760	4,700	560	860	137
23252W33C3	260	480	174	5	2,760	4,700	560	860	141
23256	280	500	176	5	2,930	5,150	510	790	150
23256K	280	500	176	5	2,930	5,150	510	790	145
23256KW33C3	280	500	176	5	2,930	5,150	510	790	145
23256W33C3	280	500	176	5	2,930	5,150	510	790	150
23260	300	540	192	5	3,450	6,000	470	730	193
23260K	300	540	192	5	3,450	6,000	470	730	187
23260KW33C3	300	540	192	5	3,450	6,000	470	730	187
23260W33C3	300	540	192	5	3,450	6,000	470	730	193
23936	180	250	52	2	440	835	1,200	1,800	8.21
23936K	180	250	52	2	440	835	1,200	1,800	7.95
23936KW33C3	180	250	52	2	440	835	1,200	1,800	7.95
23936W33C3	180	250	52	2	440	835	1,200	1,800	8.21
23938	190	260	52	2	460	890	1,100	1,700	8.6
23938K	190	260	52	2	460	890	1,100	1,700	8.34



<b>23938KW33C3</b>	190	260	52	2	460	890	1,100	1,700	8.34
<b>23938W33C3</b>	190	260	52	2	460	890	1,100	1,700	8.6
<b>23940</b>	200	280	60	2.1	545	1,100	1,000	1,600	12.1
<b>23940K</b>	200	280	60	2.1	545	1,100	1,000	1,600	11.7
<b>23940KW33C3</b>	200	280	60	2.1	545	1,100	1,000	1,600	11.7
<b>23940W33C3</b>	200	280	60	2.1	545	1,100	1,000	1,600	12.1
<b>23944</b>	220	300	60	2.1	565	1,170	930	1,400	13.1
<b>23944K</b>	220	300	60	2.1	565	1,170	930	1,400	12.7
<b>23944KW33C3</b>	220	300	60	2.1	565	1,170	930	1,400	12.7
<b>23944W33C3</b>	220	300	60	2.1	565	1,170	930	1,400	13.1
<b>23948</b>	240	320	60	2.1	565	1,190	840	1,300	14
<b>23948K</b>	240	320	60	2.1	565	1,190	840	1,300	13.6
<b>23948KW33C3</b>	240	320	60	2.1	565	1,190	840	1,300	13.6
<b>23948W33C3</b>	240	320	60	2.1	565	1,190	840	1,300	14
<b>23952</b>	260	360	75	2.1	760	1,580	770	1,200	24
<b>23952K</b>	260	360	75	2.1	760	1,580	770	1,200	23.3
<b>23952KW33C3</b>	260	360	75	2.1	760	1,580	770	1,200	23.3
<b>23952W33C3</b>	260	360	75	2.1	760	1,580	770	1,200	24
<b>23956</b>	280	380	75	2.1	830	1,750	710	1,100	26.4
<b>23956K</b>	280	380	75	2.1	830	1,750	710	1,100	25.6
<b>23956KW33C3</b>	280	380	75	2.1	830	1,750	710	1,100	25.6
<b>23956W33C3</b>	280	380	75	2.1	830	1,750	710	1,100	26.4
<b>23960</b>	300	420	90	3	1,110	2,320	650	1,000	40
<b>23960K</b>	300	420	90	3	1,110	2,320	650	1,000	38.7
<b>23960KW33C3</b>	300	420	90	3	1,110	2,320	650	1,000	38.7
<b>23960W33C3</b>	300	420	90	3	1,110	2,320	650	1,000	40
<b>24024</b>	120	180	60	2	390	670	1,500	2,300	5.48
<b>24024K30</b>	120	180	60	2	390	670	1,500	2,300	5.39
<b>24024K30W33C3</b>	120	180	60	2	390	670	1,500	2,300	5.39
<b>24024W33C3</b>	120	180	60	2	390	670	1,500	2,300	5.48
<b>24026</b>	130	200	69	2	505	895	1,300	2,100	8.08
<b>24026K30</b>	130	200	69	2	505	895	1,300	2,100	7.95
<b>24026K30W33C3</b>	130	200	69	2	505	895	1,300	2,100	7.95
<b>24026W33C3</b>	130	200	69	2	505	895	1,300	2,100	8.08
<b>24028</b>	140	210	69	2	510	945	1,200	1,900	8.57
<b>24028K30</b>	140	210	69	2	510	945	1,200	1,900	8.43
<b>24028K30W33C3</b>	140	210	69	2	510	945	1,200	1,900	8.43
<b>24028W33C3</b>	140	210	69	2	510	945	1,200	1,900	8.57
<b>24030</b>	150	225	75	2.1	585	1,060	1,200	1,800	10.7
<b>24030K30</b>	150	225	75	2.1	585	1,060	1,200	1,800	10.5
<b>24030K30W33C3</b>	150	225	75	2.1	585	1,060	1,200	1,800	10.5
<b>24030W33C3</b>	150	225	75	2.1	585	1,060	1,200	1,800	10.7

<b>24032</b>	160	240	80	2.1	650	1,200	1,100	1,700	13
<b>24032K30</b>	160	240	80	2.1	650	1,200	1,100	1,700	12.8
<b>24032K30W33C3</b>	160	240	80	2.1	650	1,200	1,100	1,700	12.8
<b>24032W33C3</b>	160	240	80	2.1	650	1,200	1,100	1,700	13
<b>24034</b>	170	260	90	2.1	800	1,470	1,000	1,600	17.7
<b>24034K30</b>	170	260	90	2.1	800	1,470	1,000	1,600	17.4
<b>24034K30W33C3</b>	170	260	90	2.1	800	1,470	1,000	1,600	17.4
<b>24034W33C3</b>	170	260	90	2.1	800	1,470	1,000	1,600	17.7
<b>24036</b>	180	280	100	2.1	965	1,770	950	1,500	23.3
<b>24036K30</b>	180	280	100	2.1	965	1,770	950	1,500	22.9
<b>24036K30W33C3</b>	180	280	100	2.1	965	1,770	950	1,500	22.9
<b>24036W33C3</b>	180	280	100	2.1	965	1,770	950	1,500	23.3
<b>24038</b>	190	290	100	2.1	995	1,850	900	1,400	24.3
<b>24038K30</b>	190	290	100	2.1	995	1,850	900	1,400	23.9
<b>24038K30W33C3</b>	190	290	100	2.1	995	1,850	900	1,400	23.9
<b>24038W33C3</b>	190	290	100	2.1	995	1,850	900	1,400	24.3
<b>24040</b>	200	310	109	2.1	1,160	2,140	850	1,300	31
<b>24040K30</b>	200	310	109	2.1	1,160	2,140	850	1,300	30.5
<b>24040K30W33C3</b>	200	310	109	2.1	1,160	2,140	850	1,300	30.5
<b>24040W33C3</b>	200	310	109	2.1	1,160	2,140	850	1,300	31
<b>24044</b>	220	340	118	3	1,350	2,570	770	1,200	40.2
<b>24044K30</b>	220	340	118	3	1,350	2,570	770	1,200	39.6
<b>24044K30W33C3</b>	220	340	118	3	1,350	2,570	770	1,200	39.6
<b>24044W33C3</b>	220	340	118	3	1,350	2,570	770	1,200	40.2
<b>24048</b>	240	360	118	3	1,410	2,770	700	1,100	43
<b>24048K30</b>	240	360	118	3	1,410	2,770	700	1,100	42.3
<b>24048K30W33C3</b>	240	360	118	3	1,410	2,770	700	1,100	42.3
<b>24048W33C3</b>	240	360	118	3	1,410	2,770	700	1,100	43
<b>24052</b>	260	400	140	4	1,830	3,550	640	980	65.2
<b>24052K30</b>	260	400	140	4	1,830	3,550	640	980	64.1
<b>24052K30W33C3</b>	260	400	140	4	1,830	3,550	640	980	64.1
<b>24052W33C3</b>	260	400	140	4	1,830	3,550	640	980	65.2
<b>24056</b>	280	420	140	4	1,950	3,950	590	900	69
<b>24056K30</b>	280	420	140	4	1,950	3,950	590	900	67.9
<b>24056K30W33C3</b>	280	420	140	4	1,950	3,950	590	900	67.9
<b>24056W33C3</b>	280	420	140	4	1,950	3,950	590	900	69
<b>24060</b>	300	460	160	4	2,450	4,950	540	840	98
<b>24060K30</b>	300	460	160	4	2,450	4,950	540	840	96.4
<b>24060K30W33C3</b>	300	460	160	4	2,450	4,950	540	840	96.4
<b>24060W33C3</b>	300	460	160	4	2,450	4,950	540	840	98
<b>24122</b>	110	180	69	2	450	755	1,500	2,400	7.07

<b>24122K30</b>	110	180	69	2	450	755	1,500	2,400	6.96
<b>24122K30W33C3</b>	110	180	69	2	450	755	1,500	2,400	6.96
<b>24122W33C3</b>	110	180	69	2	450	755	1,500	2,400	7.07
<b>24124</b>	120	200	80	2	575	945	1,400	2,100	10.3
<b>24124K30</b>	120	200	80	2	575	945	1,400	2,100	10.1
<b>24124K30W33C3</b>	120	200	80	2	575	945	1,400	2,100	10.1
<b>24124W33C3</b>	120	200	80	2	575	945	1,400	2,100	10.3
<b>24126</b>	130	210	80	2	585	995	1,300	2,000	11
<b>24126K30</b>	130	210	80	2	585	995	1,300	2,000	10.8
<b>24126K30W33C3</b>	130	210	80	2	585	995	1,300	2,000	10.8
<b>24126W33C3</b>	130	210	80	2	585	995	1,300	2,000	11
<b>24128</b>	140	225	85	2.1	670	1,150	1,200	1,800	13.3
<b>24128K30</b>	140	225	85	2.1	670	1,150	1,200	1,800	13.1
<b>24128K30W33C3</b>	140	225	85	2.1	670	1,150	1,200	1,800	13.1
<b>24128W33C3</b>	140	225	85	2.1	670	1,150	1,200	1,800	13.3
<b>24130</b>	150	250	100	2.1	885	1,520	1,100	1,700	20.2
<b>24130K30</b>	150	250	100	2.1	885	1,520	1,100	1,700	20
<b>24130K30W33C3</b>	150	250	100	2.1	885	1,520	1,100	1,700	20
<b>24130W33C3</b>	150	250	100	2.1	885	1,520	1,100	1,700	20.2
<b>24132</b>	160	270	109	2.1	1,040	1,780	1,000	1,600	26
<b>24132K30</b>	160	270	109	2.1	1,040	1,780	1,000	1,600	25.6
<b>24132K30W33C3</b>	160	270	109	2.1	1,040	1,780	1,000	1,600	25.6
<b>24132W33C3</b>	160	270	109	2.1	1,040	1,780	1,000	1,600	26
<b>24134</b>	170	280	109	2.1	1,080	1,880	960	1,500	27.2
<b>24134K30</b>	170	280	109	2.1	1,080	1,880	960	1,500	26.8
<b>24134K30W33C3</b>	170	280	109	2.1	1,080	1,880	960	1,500	26.8
<b>24134W33C3</b>	170	280	109	2.1	1,080	1,880	960	1,500	27.2
<b>24136</b>	180	300	118	3	1,250	2,210	900	1,400	34.3
<b>24136K30</b>	180	300	118	3	1,250	2,210	900	1,400	33.8
<b>24136K30W33C3</b>	180	300	118	3	1,250	2,210	900	1,400	33.8
<b>24136W33C3</b>	180	300	118	3	1,250	2,210	900	1,400	34.3
<b>24138</b>	190	320	128	3	1,420	2,480	850	1,300	42.8
<b>24138K30</b>	190	320	128	3	1,420	2,480	850	1,300	42.2
<b>24138K30W33C3</b>	190	320	128	3	1,420	2,480	850	1,300	42.2
<b>24138W33C3</b>	190	320	128	3	1,420	2,480	850	1,300	42.8
<b>24140</b>	200	340	140	3	1,630	2,900	800	1,200	53.4
<b>24140K30</b>	200	340	140	3	1,630	2,900	800	1,200	52.6
<b>24140K30W33C3</b>	200	340	140	3	1,630	2,900	800	1,200	52.6
<b>24140W33C3</b>	200	340	140	3	1,630	2,900	800	1,200	53.4
<b>24144</b>	220	370	150	4	1,880	3,400	720	1,100	67
<b>24144K30</b>	220	370	150	4	1,880	3,400	720	1,100	66
<b>24144K30W33C3</b>	220	370	150	4	1,880	3,400	720	1,100	66
<b>24144W33C3</b>	220	370	150	4	1,880	3,400	720	1,100	67

24148	240	400	160	4	2,110	3,800	650	1,000	82.2
24148K30	240	400	160	4	2,110	3,800	650	1,000	80.9
24148K30W33C3	240	400	160	4	2,110	3,800	650	1,000	80.9
24148W33C3	240	400	160	4	2,110	3,800	650	1,000	82.2
24152	260	440	180	4	2,510	4,600	600	920	114
24152K30	260	440	180	4	2,510	4,600	600	920	112
24152K30W33C3	260	440	180	4	2,510	4,600	600	920	112
24152W33C3	260	440	180	4	2,510	4,600	600	920	114
24156	280	460	180	5	2,730	5,200	550	850	120
24156K30	280	460	180	5	2,730	5,200	550	850	118
24156K30W33C3	280	460	180	5	2,730	5,200	550	850	118
24156W33C3	280	460	180	5	2,730	5,200	550	850	120
24160	300	500	200	5	3,300	6,400	510	780	161
24160K30	300	500	200	5	3,300	6,400	510	780	159
24160K30W33C3	300	500	200	5	3,300	6,400	510	780	159
24160W33C3	300	500	200	5	3,300	6,400	510	780	161

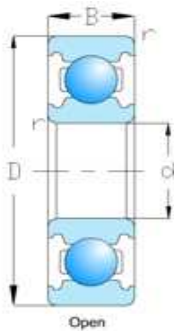


[www.sks-bearing.com](http://www.sks-bearing.com)

**SKS BEARING**  
47807 Krefeld, Germany

Tel: +49-17621845243: Fax: +49-21514869900

## DEEP GROOVE BALL BEARING



Bearing No.	Boundary dimensions				Basic load ratings (kN)		Limiting speed		Mass
	mm				Dynamic	Static	rpm		Kg
	d	D	B	r <sub>s min</sub>	C <sub>r</sub>	C <sub>or</sub>	Grease	Oil	≈

6000	10	26	8	0.3	4.58	1.98	29000	34000	0.019
6001	12	28	8	0.3	5.1	2.38	26000	30000	0.022
6002	15	32	9	0.3	5.58	2.85	22000	26000	0.031
6003	17	35	10	0.3	6	3.25	20000	24000	0.04
6004	20	42	12	0.6	9.38	5.02	18000	21000	0.068
6005	25	47	12	0.6	10	5.85	15000	18000	0.078
6006	30	55	13	1	13.2	8.3	13000	15000	0.11
6007	35	62	14	1	16.2	10.5	12000	14000	0.148
6008	40	68	15	1	17.2	11.8	10000	12000	0.185
6009	45	75	16	1	21	14.8	9200	11000	0.23
6010	50	80	16	1	22	16.2	8400	9800	0.258
6011	55	90	18	1.1	30.2	21.8	7700	9000	0.362
6012	60	95	18	1.1	31.5	24.2	7000	8300	0.385
6013	65	100	18	1.1	30.5	25.2	6500	7700	0.435
6014	70	110	20	1.1	38.1	30.9	6100	7100	0.602
6015	75	115	20	1.1	39.6	33.5	5700	6700	0.638
6016	80	125	22	1.1	47.6	39.8	5300	6200	0.85
6017	85	130	22	1.1	49.5	43.1	5000	5900	0.89
6018	90	140	24	1.5	58.2	49.7	4700	5600	1.16
6019	95	145	24	1.5	60.4	53.9	4500	5300	1.21
6020	100	150	24	1.5	60.2	54.2	4200	5000	1.25
6021	105	160	26	2	72.3	65.8	4000	4700	1.59
6022	110	170	28	2	82	73	3800	4500	1.96
6024	120	180	28	2	85	79.5	3500	4100	2.07
6026	130	200	33	2	106	101	3200	3800	3.16
6028	140	210	33	2	110	109	3000	3500	3.35
6030	150	225	35	2.1	126	126	2800	3200	4.08
6032	160	240	38	2.1	143	144	2600	3000	5.05
6034	170	260	42	2.1	168	172	2400	2800	6.76
6036	180	280	46	2.1	189	199	2300	2700	8.8
6038	190	290	46	2.1	197	215	2100	2500	9.18
6040	200	310	51	2.1	218	243	2000	2400	11.9
6200	10	30	9	0.6	5.1	2.38	25000	30000	0.032
6201	12	32	10	0.6	6.82	3.05	22000	26000	0.035
6202	15	35	11	0.6	7.65	3.72	19000	23000	0.045
6203	17	40	12	0.6	9.58	4.78	18000	21000	0.064
6204	20	47	14	1	12.8	6.65	16000	18000	0.103
6205	25	52	15	1	14	7.88	13000	15000	0.127
6206	30	62	16	1	19.5	11.5	11000	13000	0.2
6207	35	72	17	1.1	25.5	15.2	9800	11000	0.288
6208	40	80	18	1.1	29.5	18	8700	10000	0.368
6209	45	85	19	1.1	31.5	20.5	7800	9200	0.416

6210	50	90	20	1.1	35	23.2	7100	8300	0.463
6211	55	100	21	1.5	43.4	29.4	6400	7600	0.607
6212	60	110	22	1.5	52.4	36.2	6000	7000	0.783
6213	65	120	23	1.5	57.2	40.1	5500	6500	0.99
6214	70	125	24	1.5	62.2	44.1	5100	6000	1.07
6215	75	130	25	1.5	67.4	48.3	4800	5600	1.18
6216	80	140	26	2	72.7	53	4500	5300	1.4
6217	85	150	28	2	84	61.9	4200	5000	1.79
6218	90	160	30	2	96.1	71.5	4000	4700	2.15
6219	95	170	32	2.1	109	81.9	3700	4400	2.62
6220	100	180	34	2.1	122	93.1	3500	4200	3.14
6221	105	190	36	2.1	133	105	3400	4000	3.7
6222	110	200	38	2.1	144	117	3200	3800	4.36
6224	120	215	40	2.1	155	131	2900	3400	5.15
6226	130	230	40	3	167	146	2700	3100	5.82
6228	140	250	42	3	166	150	2500	2900	7.57
6230	150	270	45	3	176	168	2300	2700	9.41
6232	160	290	48	3	185	186	2100	2500	11.7
6234	170	310	52	4	212	223	2000	2400	14.5
6236	180	320	52	4	227	241	1900	2200	15.1
6238	190	340	55	4	255	281	1800	2100	18.2
6240	200	360	58	4	269	310	1700	2000	21.6
6244	220	400	65	4	297	365	1500	1800	30.2
6300	10	35	11	0.6	7.65	3.48	23000	27000	0.053
6301	12	37	12	1	9.72	5.08	20000	24000	0.061
6302	15	42	13	1	11.5	5.42	17000	21000	0.08
6303	17	47	14	1	13.5	6.58	16000	19000	0.109
6304	20	52	15	1.1	15.8	7.88	14000	17000	0.142
6305	25	62	17	1.1	22.2	11.5	12000	14000	0.219
6306	30	72	19	1.1	27	15.2	10000	12000	0.349
6307	35	80	21	1.5	33.2	19.2	8800	10000	0.455
6308	40	90	23	1.5	40.8	24	7800	9200	0.639
6309	45	100	25	1.5	52.8	31.8	7000	8200	0.873
6310	50	110	27	2	62	38.3	6400	7500	1.07
6311	55	120	29	2	71.6	45	5800	6800	1.37
6312	60	130	31	2.1	81.9	52.2	5400	6300	1.7
6313	65	140	33	2.1	92.7	59.9	4900	5800	2.08
6314	70	150	35	2.1	104	68.2	4600	5400	2.52
6315	75	160	37	2.1	113	77.2	4300	5000	3.02
6316	80	170	39	2.1	123	86.7	4000	4700	3.59
6317	85	180	41	3	133	96.8	3800	4500	4.23
6318	90	190	43	3	143	107	3600	4200	4.91



<b>681</b>	1	3	1	0.05	80	22	120,000	140,000	0.05
<b>68/1.5</b>	1.5	4	1.2	0.15	102	29	88,000	100,000	0.07
<b>682</b>	2	5	1.5	0.08	171	51	74,000	87,000	0.13
<b>68/2.5</b>	2.5	6	1.8	0.08	209	73	65,000	76,000	0.22
<b>683</b>	3	7	2	0.1	390	130	58,000	68,000	0.33
<b>684</b>	4	9	2.5	0.15	640	224	49,000	57,000	0.67
<b>685</b>	5	11	3	0.15	715	282	43,000	51,000	1.1
<b>686</b>	6	13	3.5	0.15	1,080	440	39,000	46,000	1.9
<b>687</b>	7	14	3.5	0.15	1,170	505	37,000	44,000	2.1
<b>688</b>	8	16	4	0.2	1,610	715	35,000	41,000	3.1
<b>689</b>	9	17	4	0.2	1,720	820	33,000	39,000	3.2
<b>691</b>	1	4	1.6	0.1	157	43	96,000	110,000	0.11
<b>69/1.5</b>	1.5	5	2	0.15	171	51	79,000	93,000	0.18
<b>692</b>	2	6	2.3	0.15	279	89	67,000	79,000	0.31
<b>69/2.5</b>	2.5	7	2.5	0.15	284	96	59,000	70,000	0.43
<b>693</b>	3	8	3	0.15	560	180	54,000	63,000	0.61
<b>694</b>	4	11	4	0.15	715	276	45,000	52,000	1.8
<b>695</b>	5	13	4	0.2	1,080	430	40,000	47,000	2.4
<b>696</b>	6	15	5	0.2	1,350	530	37,000	44,000	3.8
<b>697</b>	7	17	5	0.3	1,610	715	35,000	41,000	5.2
<b>698</b>	8	19	6	0.3	1,990	865	33,000	39,000	7.3
<b>699</b>	9	20	6	0.3	2,480	1,090	32,000	38,000	8.2
<b>6700</b>	10	15	3	0.1	0.8	0.39	36000	42000	0.0015
<b>6701</b>	12	18	4	0.2	0.91	0.53	8300	9500	0.002
<b>6702</b>	15	21	4	0.2	0.85	0.49	6600	7600	0.0025
<b>6703</b>	17	23	4	0.2	0.96	0.61	5000	6700	0.0025
<b>6704</b>	20	27	4	0.2	1.03	0.72	5000	5700	0.0045
<b>6705</b>	25	32	4	0.2	1.09	0.83	4000	4600	0.005
<b>6706</b>	30	37	4	0.2	1.17	0.98	3300	3800	0.006
<b>6800</b>	10	19	5	0.3	1.83	0.925	32000	38000	0.005
<b>6801</b>	12	21	5	0.3	1.92	1.04	29000	35000	0.006
<b>6802</b>	15	24	5	0.3	2.08	1.26	26000	31000	0.007
<b>6803</b>	17	26	5	0.3	2.81	1.72	24000	28000	0.008
<b>6804</b>	20	32	7	0.3	4	2.47	21000	25000	0.019
<b>6805</b>	25	37	7	0.3	4.3	2.95	18000	21000	0.022
<b>6806</b>	30	42	7	0.3	4.7	3.65	15000	18000	0.026
<b>6807</b>	35	47	7	0.3	4.9	4.05	13000	16000	0.029
<b>6808</b>	40	52	7	0.3	4.95	4.2	12000	14000	0.033
<b>6809</b>	45	58	7	0.3	6.2	5.4	11000	12000	0.04
<b>6810</b>	50	65	7	0.3	6.6	6.1	9600	11000	0.052



6811	55	72	9	0.3	8.8	8.1	8700	10000	0.083
6812	60	78	10	0.3	11.5	10.6	8000	9400	0.104
6813	65	85	10	0.6	11.9	11.5	7400	8700	0.126
6814	70	90	10	0.6	12.1	11.9	6900	8100	0.134
6815	75	95	10	0.6	12.5	12.9	6400	7600	0.142
6816	80	100	10	0.6	12.7	13.3	6000	7100	0.15
6817	85	110	13	1	18.7	19	5700	6700	0.266
6818	90	115	13	1	19	19.7	5400	6300	0.279
6819	95	120	13	1	19.3	19.7	5000	5900	0.705
6820	100	125	13	1	19.6	21.2	4800	5600	0.309
6821	105	130	13	1	19.8	23.9	4600	5400	0.324
6822	110	140	16	1	28.1	30.7	4300	5100	0.606
6824	120	150	16	1	29	33	4000	4700	0.655
6826	130	165	18	1.1	36.9	41.2	3700	4300	0.939
6828	140	175	18	1.1	38.2	44.4	3400	4000	1
6830	150	190	20	1.1	47.8	54.9	3100	3700	1.4
6832	160	200	20	1.1	48.5	57	2900	3400	1.23
6834	170	215	22	1.1	60	70.5	2700	3200	1.63
6836	180	225	22	1.1	60.5	73	2600	3000	2.03
6838	190	240	24	1.5	73	88	2400	2900	2.62
6840	200	250	24	1.5	74	91.5	2300	2700	2.73
6900	10	22	6	0.3	2.7	1.25	30000	36000	0.01
6901	12	24	6	0.3	2.9	1.45	27000	32000	0.011
6902	15	28	7	0.3	4.3	2.25	24000	28000	0.017
6903	17	30	7	0.3	4.6	2.55	22000	26000	0.018
6904	20	37	9	0.3	6.35	3.7	19000	23000	0.036
6905	25	42	9	0.3	7	4.55	16000	19000	0.041
6906	30	47	9	0.3	7.25	5	14000	17000	0.045
6907	35	55	10	0.6	10.9	7.75	12000	15000	0.073
6908	40	62	12	0.6	13.7	9.95	11000	13000	0.112
6909	45	68	12	0.6	14.1	10.9	9800	12000	0.132
6910	50	72	12	0.6	14.5	11.7	8900	11000	0.133
6911	55	80	13	1	16.6	14.1	8200	9600	0.185
6912	60	85	13	1	20.2	17.3	7600	8900	0.193
6913	65	90	13	1	17.4	16.1	7000	8200	0.211
6914	70	100	16	1	23.7	21.2	6500	7700	0.342
6915	75	105	16	1	24.4	22.6	6100	7200	0.363
6916	80	110	16	1	25	24	5700	6700	0.382
6917	85	120	18	1.1	31.9	29.6	5400	6300	0.535
6918	90	125	18	1.1	32.8	31.6	5100	6000	0.565
6919	95	130	18	1.1	33.7	33.5	4800	5700	0.579
6920	100	140	20	1.1	45	41.9	4500	5300	0.785

6921	105	145	20	1.1	46.5	44.8	4300	5100	0.816
6922	110	150	20	1.1	47.9	47.8	4100	4800	0.849
6924	120	165	22	1.1	57.2	56.9	3800	4400	1.15
6926	130	180	24	1.5	69.6	70	3500	4100	1.52
6928	140	190	24	1.5	71.3	74.8	3200	3800	1.62
6930	150	210	28	2	93.4	94.3	3000	3500	2.47
6932	160	220	28	2	87	96	2800	3300	2.61
6934	170	230	28	2	86	95.5	2600	3100	2.74
6936	180	250	33	2	110	119	2400	2900	4.76
6938	190	260	33	2	113	127	2300	2700	4.98
6940	200	280	38	2.1	157	168	2200	2600	7.1
16001	12	28	7	0.3	5.1	2.39	26000	30000	0.019
16002	15	32	8	0.3	5.6	2.83	22000	26000	0.025
16003	17	35	8	0.3	6.8	3.35	20000	24000	0.032
16004	20	42	8	0.3	7.9	4.5	18000	21000	0.051
16005	25	47	8	0.3	8.35	5.1	15000	18000	0.06
16006	30	55	9	0.3	11.2	7.35	13000	15000	0.091
16007	35	62	9	0.3	11.7	8.2	12000	14000	0.11
16008	40	68	9	0.3	12.6	9.65	10000	12000	0.125
16009	45	75	10	0.6	12.9	10.5	9200	11000	0.171
16010	50	80	10	0.6	13.2	11.3	8400	9800	0.18
16011	55	90	11	0.6	18.6	15.3	7700	9000	0.258
16012	60	95	11	0.6	20	17.5	7000	8300	0.283
16013	65	100	11	0.6	20.5	18.7	6500	7700	0.307
16014	70	110	13	0.6	24.4	22.6	6100	7100	0.441
16015	75	115	13	0.6	25	24	5700	6700	0.464
16016	80	125	14	0.6	25.4	25.1	5300	6200	0.597
16017	85	130	14	0.6	25.9	26.2	5000	5900	0.626
16018	90	140	16	1	33.5	33.5	4700	5600	0.848
16019	95	145	16	1	34.5	35	4500	5300	0.885
16020	100	150	16	1	35	36.5	4200	5000	0.91
16021	105	160	18	1	52	50.5	4000	4700	1.2
16022	110	170	19	1	57.5	56.5	3800	4500	1.46
16024	120	180	19	1	63	63.5	3500	4100	1.56
16026	130	200	22	1.1	80	79.5	3200	3800	2.31
16028	140	210	22	1.1	82	85	3000	3500	2.45
16030	150	225	24	1.1	96.5	101	2800	3200	3.07
16032	160	240	25	1.5	99	108	2600	3000	3.64
16034	170	260	28	1.5	119	128	2400	2800	4.93
16036	180	280	31	2	117	134	2300	2700	6.49
16038	190	290	31	2	134	156	2100	2500	6.77
16040	200	310	34	2	142	160	2000	2400	8.68

Bearing No.	Boundary dimensions								Mass
	d		D		B		r <sub>s min</sub>		g
	in	mm	in	mm	in	mm	in	mm	≈
R6	3/8	9.525	7/8	22.225	0.2189	5.56	0.016	0.4	11
R8	1/2	12.7	1 1/8	28.575	0.25	6.35	0.016	0.4	18
R10	5/8	15.875	1 3/8	34.925	0.2181	7.14	0.031	0.8	37
R12	3/4	19.05	1 5/8	41.275	0.3126	7.94	0.031	0.8	47
R14	7/8	22.225	1 7/8	47.625	0.3752	9.53	0.031	0.8	71
R16	1	25.4	2	50.8	0.3752	9.53	0.031	0.8	85
R18	1 1/8	28.575	2 1/8	53.975	0.3752	9.53	0.031	0.8	90
R20	1 1/4	31.75	2 1/4	57.15	0.3752	9.53	0.031	0.8	95
R22	1 3/8	34.925	2 1/2	63.5	0.4374	11.11	0.031	0.8	106
R24	1 1/2	38.1	2 5/8	66.675	0.4374	11.11	0.031	0.8	141
Bearing No.	Boundary dimensions				Basic load ratings (kN)		Mass		
	mm				Dynamic	Static	Kg		
	d	D	B	r <sub>s min</sub>	Cr	Cor	≈		
6403	17	62	17	1	22.5	10.8	0.268		
6404	20	72	19	1	31	15.2	0.4		
6405	25	80	21	1.5	38.2	19.2	529		
6406	30	90	23	1.5	56.8	24.5	0.71		
6407	35	100	25	1.5	56.8	29.5	0.926		
6408	40	110	27	2	63.7	36.6	1.23		
6409	45	120	29	2	77.2	45.1	1.53		
6410	50	130	31	2.1	83	49.5	1.88		
6411	55	140	33	2.1	100	62.3	2.29		
6412	60	150	35	2.1	110	70.8	2.77		
6413	65	160	37	2.1	118	79.2	3.3		
6414	70	180	42	3	144	104	4.83		
6415	75	190	45	3	154	115	5.87		
6416	80	200	48	3	164	125	6.84		
6417	85	210	52	4	173	136	8.07		
6418	90	225	54	4	184	149	9.78		
Bearing No.	Boundary dimensions				Basic load ratings (kN)		Mass		
	mm				Dynamic	Static	Kg		
	d	D	B	r <sub>s min</sub>	Cr	Cor	≈		
1602	6.35	17.462	6.35	0.3	1.97	0.73	0.0064		
1603	7.938	22.225	7.144	0.3	3.29	1.36	0.0095		
1604	9.525	22.225	7.144	0.4	3.33	1.41	0.0086		
1605	7.938	23.019	7.938	0.3	3.33	1.41	0.0168		

1606	9.525	23.019	7.938	0.4	3.33	1.41	0.0218		
1607	11.112	23.019	7.938	0.4	2.69	1.27	0.0222		
1614	9.525	28.575	9.525	0.6	3.92	2.25	0.035		
1615	11.112	28.575	9.525	0.6	3.92	2.25	0.034		
1616	12.7	28.575	9.525	0.6	3.92	2.25	0.03		
1620	11.112	34.925	11.112	0.6	5.9	3.5	0.05		
1621	12.7	34.925	11.112	0.6	5.9	3.5	0.048		
1622	14.288	34.925	11.112	0.6	5.9	3.5	0.04		
1623	15.875	34.925	11.112	0.6	5.9	3.5	0.048		
1628	15.875	41.275	12.7	0.6	7.25	3.5	0.072		
1630	19.05	41.275	12.7	0.6	7.25	4.45	0.065		
1633	15.875	44.45	12.7	0.6	7.25	4.45	0.092		
1635	19.05	44.45	12.7	0.6	7.25	4.45	0.085		
1638	19.05	50.8	14.288	0.8	10.8	4.45	0.12		
1640	22.225	50.8	14.288	0.8	10.8	6.95	0.112		
1641	25.4	50.8	14.288	0.8	10.8	6.95	0.1		
1652	28.575	63.5	15.875	0.8	12.8	6.95	0.21		
1654	31.75	63.5	15.875	0.8	12.8	8.4	0.19		
1657	31.8	65.1	17.5	0.8	16.5	10.6	0.215		
1658	33.3	65.1	17.5	0.8	16.5	10.6	0.2		

Bearing No.	Boundary dimensions							Basic load ratings		Limiting speed rpm	Mass Kg ≈
	d		D		B		r <sub>s min</sub>	Dynamic	Static		
	in	mm	in	mm	in	mm	in	Cr	Cor		
RLS4	1/2	12.7	1 5/16	33.338	3/8	9.525	1/32	520	380	24000	0.03
RLS5	5/8	15.875	1 9/16	39.688	7/16	11.112	1/22	720	430	21000	0.06
RLS6	3/4	19.05	1 7/8	47.625	9/16	14.288	1/16	1000	630	17000	0.11
RLS7	7/8	22.225	2	50.8	9/16	14.288	1/16	1200	760	16000	0.13
RLS8	1	25.4	2 1/4	57.15	5/8	15.875	1/16	1400	970	14000	0.17
RLS9	1 1/8	28.575	2 1/2	63.5	5/8	15.875	1/16	1530	1020	12500	0.21
RLS10	1 1/4	31.75	2 3/4	69.85	11/16	17.462	1/16	1830	1230	11500	0.28
RLS11	1 3/8	34.925	3	76.2	11/16	17.472	1/16	2010	1390	10500	0.37
RLS12	1 1/2	38.1	3 1/4	82.55	3/4	19.05	1/32	2400	1700	9500	0.43

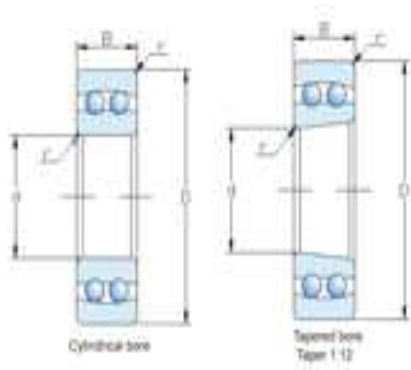


[www.sks-bearing.com](http://www.sks-bearing.com)

**SKS BEARING**  
47807 Krefeld, Germany

Tel: +49-17621845243; Fax: +49-21514869900

## SELF-ALIGNING BALL BEARING



Bearing No.	Boundary dimensions				Basic load ratings(kN)		Limiting speed		Mass
	mm				Dynamic	Static	rpm		kg
	d	D	B	r <sub>smin</sub>	Cr	Cor	Grease	Oil	≈
1200	10	30	9	0.6	5.5	1.19	21,000	24,000	0.033
1201	12	32	10	0.6	5.6	1.27	18,000	22,000	0.04
1202	15	35	11	0.6	7.45	1.75	16,000	19,000	0.049
1203	17	40	12	0.6	7.9	2.01	14,000	17,000	0.072
1204	20	47	14	1	9.9	2.61	13,000	15,000	0.116
1204K	20	47	14	1	9.9	2.61	13,000	15,000	0.114
1205	25	52	15	1	12.1	3.3	11,000	13,000	0.138
1205K	25	52	15	1	12.1	3.3	11,000	13,000	0.135
1206	30	62	16	1	15.6	4.65	9,200	11,000	0.217
1206K	30	62	16	1	15.6	4.65	9,200	11,000	0.213
1207	35	72	17	1.1	15.8	5.1	8,000	9,400	0.317
1207K	35	72	17	1.1	15.8	5.1	8,000	9,400	0.312
1208	40	80	18	1.1	19.3	6.55	7,100	8,400	0.414
1208K	40	80	18	1.1	19.3	6.55	7,100	8,400	0.407
1209	45	85	19	1.1	21.9	7.35	6,400	7,500	0.457
1209K	45	85	19	1.1	21.9	7.35	6,400	7,500	0.448
1210	50	90	20	1.1	22.7	8.1	5,800	6,800	0.515
1210K	50	90	20	1.1	22.7	8.1	5,800	6,800	0.504
1211	55	100	21	1.5	26.8	10	5,300	6,200	0.692

1211K	55	100	21	1.5	26.8	10	5,300	6,200	0.679
1212	60	110	22	1.5	30	11.5	4,900	5,800	0.879
1212K	60	110	22	1.5	30	11.5	4,900	5,800	0.864
1213	65	120	23	1.5	31	12.5	4,500	5,300	1.13
1213K	65	120	23	1.5	31	12.5	4,500	5,300	1.11
1214	70	125	24	1.5	34.5	13.8	4,200	4,900	1.24
1215	75	130	25	1.5	39	15.7	3,900	4,600	1.33
1215K	75	130	25	1.5	39	15.7	3,900	4,600	1.31
1216	80	140	26	2	40	17	3,700	4,300	1.65
1216K	80	140	26	2	40	17	3,700	4,300	1.62
1217	85	150	28	2	49	20.8	3,500	4,100	2.06
1217K	85	150	28	2	49	20.8	3,500	4,100	2.03
1218	90	160	30	2	57	23.5	3,300	3,800	2.51
1218K	90	160	30	2	57	23.5	3,300	3,800	2.47
1219	95	170	32	2.1	64	27.1	3,100	3,600	3.1
1219K	95	170	32	2.1	64	27.1	3,100	3,600	3.05
1220	100	180	34	2.1	69	29.7	2,900	3,400	3.7
1220K	100	180	34	2.1	69	29.7	2,900	3,400	3.64
1221	105	190	36	2.1	74.5	32.5	2,800	3,300	4.34
1222	110	200	38	2.1	80.5	35.5	2,600	3,100	5.15
1222K	110	200	38	2.1	80.5	35.5	2,600	3,100	5.07

1300	10	35	11	0.6	7.25	1.62	18,000	21,000	0.058
1301	12	37	12	1	9.45	2.16	16,000	18,000	0.066
1302	15	42	13	1	9.55	2.3	13,000	16,000	0.092
1303	17	47	14	1	12.5	3.2	12,000	14,000	0.128
1304	20	52	15	1.1	12.4	3.35	11,000	13,000	0.16
1304K	20	52	15	1.1	12.4	3.35	11,000	13,000	0.158
1305	25	62	17	1.1	18	5	9,100	11,000	0.255
1305K	25	62	17	1.1	18	5	9,100	11,000	0.251
1306	30	72	19	1.1	21.3	6.3	7,700	9,100	0.383
1306K	30	72	19	1.1	21.3	6.3	7,700	9,100	0.377
1307	35	80	21	1.5	25.1	7.85	6,800	8,000	0.5
1307K	35	80	21	1.5	25.1	7.85	6,800	8,000	0.492
1308	40	90	23	1.5	29.6	9.7	6,000	7,000	0.709
1308K	40	90	23	1.5	29.6	9.7	6,000	7,000	0.698
1309	45	100	25	1.5	38	12.7	5,400	6,300	0.953
1309K	45	100	25	1.5	38	12.7	5,400	6,300	0.938
1310	50	110	27	2	43.5	14.1	4,900	5,800	1.2
1310K	50	110	27	2	43.5	14.1	4,900	5,800	1.18
1311	55	120	29	2	51.5	17.9	4,500	5,200	1.58
1311K	55	120	29	2	51.5	17.9	4,500	5,200	1.56
1312	60	130	31	2.1	57	20.8	4,100	4,800	1.96
1312K	60	130	31	2.1	57	20.8	4,100	4,800	1.93

1313	65	140	33	2.1	62	22.9	3,800	4,500	2.42
1313K	65	140	33	2.1	62	22.9	3,800	4,500	2.38
1314	70	150	35	2.1	74.5	27.7	3,500	4,200	2.99
1315	75	160	37	2.1	79.5	30	3,300	3,900	3.55
1315K	75	160	37	2.1	79.5	30	3,300	3,900	3.5
1316	80	170	39	2.1	88.5	33	3,100	3,600	4.17
1316K	80	170	39	2.1	88.5	33	3,100	3,600	4.11
1317	85	180	41	3	97.5	38	2,900	3,400	4.96
1317K	85	180	41	3	97.5	38	2,900	3,400	4.89
1318	90	190	43	3	116	44.5	2,700	3,200	5.78
1318K	90	190	43	3	116	44.5	2,700	3,200	5.69
1319	95	200	45	3	132	51	2,600	3,000	6.69
1319K	95	200	45	3	132	51	2,600	3,000	6.59
1320	100	215	47	3	143	57.5	2,400	2,900	8.3
1320K	100	215	47	3	143	57.5	2,400	2,900	8.19
1321	105	225	49	3	156	64.5	2,300	2,700	10
1322	110	240	50	3	164	71.5	2,200	2,600	11.8
1322K	110	240	50	3	164	71.5	2,200	2,600	11.7

2200	10	30	14	0.6	7.3	1.59	19,000	23,000	0.047
2201	12	32	14	0.6	7.6	1.73	17,000	20,000	0.051
2202	15	35	14	0.6	7.7	1.85	15,000	18,000	0.06
2203	17	40	16	0.6	9.8	2.41	13,000	16,000	0.088
2204	20	47	18	1	12.6	3.3	12,000	14,000	0.14
2204K	20	47	18	1	12.6	3.3	12,000	14,000	0.137
2205	25	52	18	1	12.3	3.45	10,000	12,000	0.157
2205K	25	52	18	1	12.3	3.45	10,000	12,000	0.153
2206	30	62	20	1	15.2	4.5	8,600	10,000	0.256
2206K	30	62	20	1	15.2	4.5	8,600	10,000	0.25
2207	35	72	23	1.1	21.5	6.6	7,500	8,800	0.392
2207K	35	72	23	1.1	21.5	6.6	7,500	8,800	0.382
2208	40	80	23	1.1	22.3	7.35	6,700	7,900	0.493
2208K	40	80	23	1.1	22.3	7.35	6,700	7,900	0.482
2209	45	85	23	1.1	23.2	8.15	6,000	7,100	0.54
2209K	45	85	23	1.1	23.2	8.15	6,000	7,100	0.528
2210	50	90	23	1.1	23.2	8.45	5,500	6,400	0.583
2210K	50	90	23	1.1	23.2	8.45	5,500	6,400	0.569
2211	55	100	25	1.5	26.5	9.9	5,000	5,800	0.787
2211K	55	100	25	1.5	26.5	9.9	5,000	5,800	0.769
2212	60	110	28	1.5	34	12.6	4,600	5,400	1.08
2212K	60	110	28	1.5	34	12.6	4,600	5,400	1.06
2213	65	120	31	1.5	43.5	16.4	4,200	5,000	1.44
2213K	65	120	31	1.5	43.5	16.4	4,200	5,000	1.41
2214	70	125	31	1.5	44	17.1	3,900	4,600	1.52

<b>2215</b>	75	130	31	1.5	44.5	17.8	3,700	4,300	1.58
<b>2215K</b>	75	130	31	1.5	44.5	17.8	3,700	4,300	1.54
<b>2216</b>	80	140	33	2	48.5	19.9	3,400	4,000	1.99
<b>2216K</b>	80	140	33	2	48.5	19.9	3,400	4,000	1.95
<b>2217</b>	85	150	36	2	58	23.6	3,200	3,800	2.54
<b>2217K</b>	85	150	36	2	58	23.6	3,200	3,800	2.49
<b>2218</b>	90	160	40	2	70	28.7	3,100	3,600	3.19
<b>2218K</b>	90	160	40	2	70	28.7	3,100	3,600	3.12
<b>2219</b>	95	170	43	2.1	83.5	34.5	2,900	3,400	3.89
<b>2219K</b>	95	170	43	2.1	83.5	34.5	2,900	3,400	3.8
<b>2220</b>	100	180	46	2.1	94	38.5	2,700	3,200	4.65
<b>2220K</b>	100	180	46	2.1	94	38.5	2,700	3,200	4.54
<b>2221</b>	105	190	50	2.1	109	45	2,600	3,100	6.07
<b>2222</b>	110	200	53	2.1	124	51.5	2,500	2,900	7.1
<b>2222K</b>	110	200	53	2.1	124	51.5	2,500	2,900	6.94

<b>2300</b>	10	35	17	0.6	10.1	2.15	17,000	20,000	0.083
<b>2301</b>	12	37	17	1	11.8	2.71	15,000	17,000	0.091
<b>2302</b>	15	42	17	1	12	2.9	13,000	15,000	0.114
<b>2303</b>	17	47	19	1	14.4	3.55	11,000	14,000	0.156
<b>2304</b>	20	52	21	1.1	18.1	4.7	10,000	12,000	0.206
<b>2304K</b>	20	52	21	1.1	18.1	4.7	10,000	12,000	0.201
<b>2305</b>	25	62	24	1.1	24.4	6.6	8,500	10,000	0.334
<b>2305K</b>	25	62	24	1.1	24.4	6.6	8,500	10,000	0.326
<b>2306</b>	30	72	27	1.1	31.5	8.75	7,200	8,500	0.496
<b>2306K</b>	30	72	27	1.1	31.5	8.75	7,200	8,500	0.485
<b>2307</b>	35	80	31	1.5	39.5	11.3	6,300	7,400	0.671
<b>2307K</b>	35	80	31	1.5	39.5	11.3	6,300	7,400	0.653
<b>2308</b>	40	90	33	1.5	45	13.5	5,600	6,600	0.918
<b>2308K</b>	40	90	33	1.5	45	13.5	5,600	6,600	0.895
<b>2309</b>	45	100	36	1.5	54	16.7	5,000	5,900	1.23
<b>2309K</b>	45	100	36	1.5	54	16.7	5,000	5,900	1.2
<b>2310</b>	50	110	40	2	64.5	20.2	4,600	5,400	1.63
<b>2310K</b>	50	110	40	2	64.5	20.2	4,600	5,400	1.59
<b>2311</b>	55	120	43	2	75.5	24	4,200	4,900	2.1
<b>2311K</b>	55	120	43	2	75.5	24	4,200	4,900	2.05
<b>2312</b>	60	130	46	2.1	87	28.2	3,800	4,500	2.59
<b>2312K</b>	60	130	46	2.1	87	28.2	3,800	4,500	2.52
<b>2313</b>	65	140	48	2.1	96	32.5	3,600	4,200	3.2
<b>2313K</b>	65	140	48	2.1	96	32.5	3,600	4,200	3.12
<b>2314</b>	70	150	51	2.1	109	37.5	3,300	3,900	3.92
<b>2315</b>	75	160	55	2.1	123	43	3,100	3,600	4.78
<b>2315K</b>	75	160	55	2.1	123	43	3,100	3,600	4.66
<b>2316</b>	80	170	58	2.1	128	45	2,900	3,400	5.65



2316K	80	170	58	2.1	128	45	2,900	3,400	5.51
2317	85	180	60	3	140	51.5	2,700	3,200	6.55
2317K	85	180	60	3	140	51.5	2,700	3,200	6.39
2318	90	190	64	3	152	57.5	2,600	3,000	7.75
2318K	90	190	64	3	152	57.5	2,600	3,000	7.56
2319	95	200	67	3	165	64.5	2,400	2,800	9.05
2319K	95	200	67	3	165	64.5	2,400	2,800	8.83
2320	100	215	73	3	192	79	2,300	2,700	11.5
2320K	100	215	73	3	192	79	2,300	2,700	11.2
2321	105	225	77	3	205	87	2,200	2,600	13.2
2322	110	240	80	3	217	94.5	2,100	2,400	15.8
2322K	110	240	80	3	217	94.5	2,100	2,400	15.4

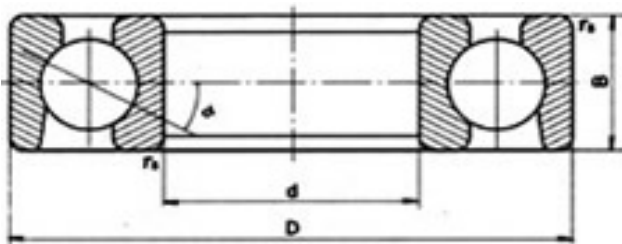


[www.sks-bearing.com](http://www.sks-bearing.com)

**SKS BEARING**  
47807 Krefeld, Germany

Tel: +49-17621845243; Fax: +49-21514869900

## ANGULAR CONTACT BALL BEARING



70000C ( $\alpha = 15^\circ$ )  
70000AC ( $\alpha = 25^\circ$ )  
70000B ( $\alpha = 40^\circ$ )

Bearing No.	Boundary dimensions			Basic load ratings(kN)		Limiting speed		Mass
	mm			Dynamic	Static	rpm		kg
	d	D	B	Cr	Cor	Grease	Oil	≈
7000C	10	26	8	4.9	2.1	24,000	32,000	0.019
7001C	12	28	8	5.4	2.6	22,000	28,000	0.021
7002C	15	32	9	6.2	3.3	19,000	25,000	0.03

<b>7003C</b>	17	35	10	6.6	3.6	16,000	22,000	0.04
<b>7004C</b>	20	42	12	10.4	6	14,000	19,000	0.064
<b>7005C</b>	25	47	12	11.6	7.4	12,000	17,000	0.074
<b>7006C</b>	30	55	13	15.1	10.2	9,500	14,000	0.11
<b>7007C</b>	35	62	14	18.2	12.7	8,500	12,000	0.15
<b>7008C</b>	40	68	15	19.7	14.9	8,000	11,000	0.18
<b>7009C</b>	45	75	16	25.9	20.2	7,500	10,000	0.23
<b>7010C</b>	50	80	16	26.6	21.8	6,700	9,000	0.25
<b>7011C</b>	55	90	18	38.9	29.5	6,000	8,000	0.38
<b>7012C</b>	60	95	18	40.9	33.1	5,600	7,500	0.4
<b>7013C</b>	65	100	18	40.1	35.3	5,300	7,000	0.43
<b>7014C</b>	70	110	20	48.3	43.1	5,000	6,700	0.6
<b>7015C</b>	75	115	20	49.6	45.9	4,800	6,300	0.63
<b>7016C</b>	80	125	22	58.9	54.7	4,500	6,000	0.85
<b>7017C</b>	85	130	22	58.1	55.9	4,300	5,600	0.89
<b>7018C</b>	90	140	24	71.7	68.7	4,000	5,300	1.15
<b>7019C</b>	95	145	24	73.5	73.1	3,800	5,000	1.2
<b>7020C</b>	100	150	24	74.4	72.5	3,800	5,000	1.25
<b>7021C</b>	105	160	26	80.6	81.1	3,600	4,800	1.6
<b>7022C</b>	110	170	28	101.4	100.3	3,400	4,600	1.95
<b>7024C</b>	120	180	28	108.6	110.7	2,800	3,800	2.1
<b>7026C</b>	130	200	33	129.4	134.7	2,600	3,400	3.33
<b>7028C</b>	140	210	33	153.4	160.5	2,400	3,200	3.46
<b>7030C</b>	150	225	35	183.9	194.2	2,200	3,000	4.8
<b>7032C</b>	160	240	38	200.1	219.4	2,000	2,800	5.26

<b>7000AC</b>	10	26	8	4.7	2.1	24,000	32,000	0.019
<b>7001AC</b>	12	28	8	5.1	2.4	22,000	28,000	0.021
<b>7002AC</b>	15	32	9	5.9	3.2	19,000	25,000	0.03
<b>7003AC</b>	17	35	10	6.3	3.6	16,000	22,000	0.04
<b>7004AC</b>	20	42	12	10	5.7	14,000	19,000	0.064
<b>7005AC</b>	25	47	12	11.1	7	12,000	17,000	0.074
<b>7006AC</b>	30	55	13	14.4	9.8	9,500	14,000	0.11
<b>7007AC</b>	35	62	14	17.3	12.1	8,500	12,000	0.15
<b>7008AC</b>	40	68	15	18.7	14.1	8,000	11,000	0.18
<b>7009AC</b>	45	75	16	24.7	19.1	7,500	10,000	0.23
<b>7010AC</b>	50	80	16	25.3	20.5	6,700	9,000	0.25
<b>7011AC</b>	55	90	18	35.5	26.5	6,000	8,000	0.38
<b>7012AC</b>	60	95	18	37	31.3	5,600	7,500	0.4
<b>7013AC</b>	65	100	18	38	33.6	5,300	7,000	0.43
<b>7014AC</b>	70	110	20	45.8	40.9	5,000	6,700	0.6
<b>7015AC</b>	75	115	20	47.5	43.3	4,800	6,300	0.63
<b>7016AC</b>	80	125	22	57.5	51	4,500	6,000	0.85
<b>7017AC</b>	85	130	22	55	52.8	4,300	5,600	0.89

7018AC	90	140	24	71.7	68.7	4,000	5,300	1.15
7019AC	95	145	24	69.8	69.1	3,800	5,000	1.2
7020AC	100	150	24	69	69.7	3,800	5,000	1.25
7021AC	105	160	26	80.9	72.2	3,600	4,800	1.6
7022AC	110	170	28	98.5	93.9	3,400	4,600	1.95
7024AC	120	180	28	103.5	104.5	2,800	3,800	2.1
7026AC	130	200	33	122.4	127.8	2,600	3,400	3.33
7028AC	140	210	33	145.3	152.8	2,400	3,200	3.46
7030AC	150	225	35	174.2	184.9	2,200	3,000	4.8
7032AC	160	240	38	189.6	209	2,000	2,800	5.26

7200C	10	30	9	5.5	2.8	22,000	28,000	0.032
7201C	12	32	10	7.9	3.8	20,000	25,000	0.037
7202C	15	35	11	9.2	4.9	17,000	22,000	0.045
7203C	17	40	12	10.8	5.8	15,000	20,000	0.062
7204C	20	47	14	14.5	8.1	13,000	18,000	0.1
7205C	25	52	15	16.5	10	11,000	16,000	0.12
7206C	30	62	16	23	14.7	9,000	13,000	0.19
7207C	35	72	17	30.3	20	8,000	11,000	0.28
7208C	40	80	18	38.4	26.3	7,500	10,000	0.37
7209C	45	85	19	40.4	29.3	6,700	9,000	0.41
7210C	50	90	20	42.8	31.3	6,300	8,500	0.46
7211C	55	100	21	53.2	39.9	5,600	7,000	0.61
7212C	60	110	22	61	48.2	5,300	7,000	0.8
7213C	65	120	23	69.8	54.4	4,800	6,300	1
7214C	70	125	24	72.8	59.7	4,500	5,800	1.1
7215C	75	130	25	79.2	65.6	4,300	5,600	1.2
7216C	80	140	26	92.5	66.2	4,000	5,300	1.45
7217C	85	150	28	99.7	84.6	3,800	5,000	1.8
7218C	90	160	30	128	111.7	3,600	4,800	2.25
7219C	95	170	32	134.6	112.2	3,400	4,500	2.7
7220C	100	180	34	149.1	125.4	3,200	4,300	3.25
7221C	105	190	36	166.6	138.6	3,000	4,000	3.85
7222C	110	200	38	184.7	154.8	2,800	3,800	4.55
7224C	120	215	40	203.1	178.4	2,400	3,400	5.4
7226C	130	230	40	206.6	209.2	2,000	3,000	6.45

7200AC	10	30	9	5.5	2.8	22,000	28,000	0.032
7201AC	12	32	10	7.6	3.6	20,000	25,000	0.037
7202AC	15	35	11	8.9	4.8	17,000	22,000	0.045
7203AC	17	40	12	10.4	5.6	15,000	20,000	0.062
7204AC	20	47	14	14	7.8	13,000	18,000	0.1
7205AC	25	52	15	15.8	9.7	11,000	16,000	0.12
7206AC	30	62	16	22.1	13.5	9,000	13,000	0.19

<b>7207AC</b>	35	72	17	29.2	18	8,000	11,000	0.28
<b>7208AC</b>	40	80	18	36.8	25.4	7,500	10,000	0.37
<b>7209AC</b>	45	85	19	38.6	28.1	6,700	9,000	0.41
<b>7210AC</b>	50	90	20	40.8	30.1	6,300	8,500	0.46
<b>7211AC</b>	55	100	21	50.8	38.2	5,600	7,000	0.61
<b>7212AC</b>	60	110	22	58.1	46	5,300	7,000	0.8
<b>7213AC</b>	65	120	23	66.6	52.1	4,800	6,300	1
<b>7214AC</b>	70	125	24	69.4	57	4,500	5,800	1.1
<b>7215AC</b>	75	130	25	75.3	62.8	4,300	5,600	1.2
<b>7216AC</b>	80	140	26	91.3	65.1	4,000	5,300	1.45
<b>7217AC</b>	85	150	28	94.9	80.8	3,800	5,000	1.8
<b>7218AC</b>	90	160	30	122	106.5	3,600	4,800	2.25
<b>7219AC</b>	95	170	32	128.4	107.8	3,400	4,500	2.7
<b>7220AC</b>	100	180	34	142.3	120.6	3,200	4,300	3.25
<b>7221AC</b>	105	190	36	159	135.1	3,000	4,000	3.85
<b>7222AC</b>	110	200	38	176.3	151.2	2,800	3,800	4.55
<b>7224AC</b>	120	215	40	193.6	170.9	2,400	3,400	5.4
<b>7226AC</b>	130	230	40	196.4	200.1	2,000	3,000	6.45

<b>7200B</b>	10	30	9	5.3	2.7	19,000	27,000	0.03
<b>7201B</b>	12	32	10	6.9	3.2	18,000	24,000	0.036
<b>7202B</b>	15	35	11	7.9	4.2	16,000	22,000	0.045
<b>7203B</b>	17	40	12	9.9	5.5	14,000	19,000	0.065
<b>7204B</b>	20	47	14	13.4	7.6	12,000	16,000	0.11
<b>7205B</b>	25	52	15	14.8	9.3	10,000	14,000	0.13
<b>7206B</b>	30	62	16	20.5	13.5	8,500	12,000	0.2
<b>7207B</b>	35	72	17	28.3	14.8	7,500	10,000	0.28
<b>7208B</b>	40	80	18	34.5	23.8	6,700	9,000	0.42
<b>7209B</b>	45	85	19	34	24.6	6,300	8,500	0.42
<b>7210B</b>	50	90	20	40.4	25.6	5,600	8,000	0.47
<b>7211B</b>	55	100	21	46.3	36	5,300	7,000	0.62
<b>7212B</b>	60	110	22	56.1	44.3	4,800	6,300	0.8
<b>7213B</b>	65	120	23	65.7	50.2	4,300	6,000	1
<b>7214B</b>	70	125	24	70.4	56.3	4,000	5,600	1.1
<b>7215B</b>	75	130	25	68.6	58.2	3,800	5,300	1.2
<b>7216B</b>	80	140	26	78.7	65.7	4,000	5,300	1.45
<b>7217B</b>	85	150	28	83.2	74.1	3,600	5,000	1.85
<b>7218B</b>	90	160	30	107.6	92.4	3,200	4,300	2.3
<b>7219B</b>	95	170	32	121.4	106.7	3,000	4,000	2.7
<b>7220B</b>	100	180	34	140.7	102.5	2,800	3,800	3.3
<b>7221B</b>	105	190	36	143.3	128.5	2,800	3,800	3.55
<b>7222B</b>	110	200	38	153.8	144.3	2,400	3,400	4.35
<b>7224B</b>	120	215	40	165.4	161.4	2,200	3,200	5.2
<b>7226B</b>	130	230	40	170.8	174.2	1,800	2,800	6.05

<b>7300C</b>	10	35	11	9.8	4.6	18,000	26,000	0.053
<b>7301C</b>	12	37	12	11.8	5.6	17,000	24,000	0.06
<b>7302C</b>	15	42	13	13.2	6.7	15,000	21,000	0.084
<b>7303C</b>	17	47	14	15.7	8.2	13,000	19,000	0.16
<b>7304C</b>	20	52	15	18.4	9.8	12,000	17,000	0.15
<b>7305C</b>	25	62	17	27.8	15.9	9,500	14,000	0.23
<b>7306C</b>	30	72	19	33.2	21.2	8,500	12,000	0.35
<b>7307C</b>	35	80	21	40.3	25.8	7,500	10,000	0.47
<b>7308C</b>	40	90	23	49.3	32.3	6,700	9,000	0.66
<b>7309C</b>	45	100	25	63.1	42.9	6,000	8,000	0.86
<b>7310C</b>	50	110	27	74.9	50.9	5,600	7,500	1.08
<b>7311C</b>	55	120	29	86.4	59.5	5,000	6,700	1.42
<b>7312C</b>	60	130	31	98.6	68.5	4,800	6,300	1.71
<b>7313C</b>	65	140	33	113.1	79.6	4,300	5,600	2.23
<b>7314C</b>	70	150	35	126	91.6	4,000	5,300	2.67
<b>7315C</b>	75	160	37	140.7	103.9	3,800	5,000	3.1
<b>7316C</b>	80	170	39	156.1	112.2	3,600	4,800	3.6
<b>7317C</b>	85	180	41	160.7	130.5	3,400	4,500	4.38
<b>7318C</b>	90	190	43	184.9	159.9	3,200	4,300	5.6
<b>7319C</b>	95	200	45	201.1	179.8	3,200	4,200	6.6
<b>7320C</b>	100	215	47	222.1	206.7	3,000	4,000	7.58
<b>7321C</b>	105	225	49	235.8	225.6	2,800	3,800	8.85
<b>7322C</b>	110	240	50	263.2	261.9	2,600	3,600	10.5

<b>7300AC</b>	10	35	11	9.5	4.4	18,000	26,000	0.053
<b>7301AC</b>	12	37	12	11.5	5.4	17,000	24,000	0.06
<b>7302AC</b>	15	42	13	12.5	6.2	15,000	21,000	0.084
<b>7303AC</b>	17	47	14	15	7.7	13,000	19,000	0.16
<b>7304AC</b>	20	52	15	17.9	9.6	12,000	17,000	0.15
<b>7305AC</b>	25	62	17	27	15.6	9,500	14,000	0.23
<b>7306AC</b>	30	72	19	32.8	20.4	8,500	12,000	0.35
<b>7307AC</b>	35	80	21	38.2	24.9	7,500	10,000	0.47
<b>7308AC</b>	40	90	23	47	31.1	6,700	9,000	0.66
<b>7309AC</b>	45	100	25	61.6	41.2	6,000	8,000	0.86
<b>7310AC</b>	50	110	27	71.9	48.5	5,600	7,500	1.08
<b>7311AC</b>	55	120	29	83.4	58	5,000	6,700	1.42
<b>7312AC</b>	60	130	31	95.2	67.2	4,800	6,300	1.71
<b>7313AC</b>	65	140	33	38	33.6	4,300	5,600	2.23
<b>7314AC</b>	70	150	35	118.8	88.2	4,000	5,300	2.67
<b>7315AC</b>	75	160	37	134.4	99.8	3,800	5,000	3.1
<b>7316AC</b>	80	170	39	149.5	107.7	3,600	4,800	3.6
<b>7317AC</b>	85	180	41	154.3	122.3	3,400	4,500	4.38
<b>7318AC</b>	90	190	43	177.6	153.5	3,200	4,300	5.6

<b>7319AC</b>	95	200	45	193.3	172.6	3,200	4,200	6.6
<b>7320AC</b>	100	215	47	213.5	198.6	3,000	4,000	7.58
<b>7321AC</b>	105	225	49	226.7	216.6	2,800	3,800	8.85
<b>7322AC</b>	110	240	50	253.2	252.4	2,600	3,600	10.5

<b>7301B</b>	12	37	12	10.5	4.9	16,000	22,000	0.06
<b>7302B</b>	15	42	13	12.4	6.5	14,000	19,000	0.08
<b>7303B</b>	17	47	14	14.1	8.1	13,000	17,000	0.16
<b>7304B</b>	20	52	15	17.3	9.6	11,000	15,000	0.14
<b>7305B</b>	25	62	17	24.3	14.1	9,000	13,000	0.23
<b>7306B</b>	30	72	19	29.3	18.1	8,000	11,000	0.34
<b>7307B</b>	35	80	21	38.3	24.4	7,000	9,500	0.45
<b>7308B</b>	40	90	23	46.5	29.5	6,300	8,500	0.63
<b>7309B</b>	45	100	25	59.6	39.6	5,600	7,500	0.85
<b>7310B</b>	50	110	27	68.1	48	5,000	6,700	1.1
<b>7311B</b>	55	120	29	82.2	56.2	4,500	6,300	1.4
<b>7312B</b>	60	130	31	91.5	65.4	4,300	5,600	1.75
<b>7313B</b>	65	140	33	102.3	75.3	3,800	5,300	2.15
<b>7314B</b>	70	150	35	114.6	85.9	3,600	5,000	2.65
<b>7315B</b>	75	160	37	127.7	95.4	3,400	4,800	3.2
<b>7316B</b>	80	170	39	141.4	107.9	3,200	4,800	3.8
<b>7317B</b>	85	180	41	155.8	120.9	3,000	4,000	4.45
<b>7318B</b>	90	190	43	157.9	136.9	3,000	4,000	5.3
<b>7319B</b>	95	200	45	172	154.1	2,800	4,000	6.4
<b>7320B</b>	100	215	47	190	177.3	2,600	3,800	7.29
<b>7321B</b>	105	225	49	201.7	193.3	2,400	3,600	8.55
<b>7322B</b>	110	240	50	225.8	225.3	2,200	3,400	9.84

<b>7406C</b>	30	90	23	57.5	33.8	6,500	8,500	0.96
<b>7407C</b>	35	100	25	66.8	41.2	5,500	8,000	1.14
<b>7408C</b>	40	110	27	80.2	53.3	5,200	7,000	1.4
<b>7409C</b>	45	120	29	93.1	60.8	5,000	6,500	1.8
<b>7410C</b>	50	130	31	119.3	81	4,500	6,000	2.25
<b>7411C</b>	55	140	33	125.3	87	4,200	5,600	2.75
<b>7412C</b>	60	150	35	136.3	98.2	3,800	5,200	3.4
<b>7413C</b>	65	160	37	147.4	110.2	3,400	4,800	4.2
<b>7414C</b>	70	180	42	160.4	126.6	3,200	4,500	5.8
<b>7415C</b>	75	190	45	171.4	138.9	3,000	4,200	7
<b>7416C</b>	80	200	48	183.2	152.9	2,800	4,000	8.4
<b>7417C</b>	85	210	52	195.1	167.6	2,600	3,700	9.6
<b>7418C</b>	90	225	54	208	184.2	2,400	3,400	11.2

<b>7406AC</b>	30	90	23	55.6	32.7	6,500	8,500	0.96
<b>7407AC</b>	35	100	25	66.4	41.9	5,500	8,000	1.14

7408AC	40	110	27	73.7	42.1	5,200	7,000	1.4
7409AC	45	120	29	84.5	55.1	5,000	6,500	1.8
7410AC	50	130	31	115.8	78.3	4,500	6,000	2.25
7411AC	55	140	33	121.4	84.5	4,200	5,600	2.75
7412AC	60	150	35	131.8	95.3	3,800	5,200	3.4
7413AC	65	160	37	142.5	106.7	3,400	4,800	4.2
7414AC	70	180	42	154.6	122	3,200	4,500	5.8
7415AC	75	190	45	165.2	133.5	3,000	4,200	7
7416AC	80	200	48	176.5	147.2	2,800	4,000	8.4
7417AC	85	210	52	188	161.5	2,600	3,700	9.6
7418AC	90	225	54	200.3	178.1	2,400	3,400	11.2

7406B	30	90	23	51.4	30.1	6,000	8,000	0.9
7407B	35	100	25	60.2	37.9	5,000	7,500	1.1
7408B	40	110	27	70.1	49.1	5,000	6,500	1.35
7409B	45	120	29	80.7	44.1	4,500	6,000	1.75
7410B	50	130	31	105.3	71.2	4,000	5,500	2.1
7411B	55	140	33	110	76.3	3,800	5,200	2.55
7412B	60	150	35	119.3	86.1	3,500	4,700	3.2
7413B	65	160	37	128.7	96.4	3,200	4,500	4
7414B	70	180	42	138.7	109.6	3,000	4,200	5.55
7415B	75	190	45	148.4	120.4	2,800	4,000	6.8
7416B	80	200	48	158.4	132.4	2,600	3,700	8.18
7417B	85	210	52	168.6	145	2,400	3,400	9.3
7418B	90	225	54	179.1	159.2	2,300	3,200	10.8

7901C	12	24	6	3.3	1.8	28,000	36,000	0.011
7902C	15	28	7	4.7	2.6	24,000	32,000	0.015
7903C	17	30	7	5	2.8	22,000	30,000	0.017
7904C	20	37	9	6.8	4.2	20,000	28,000	0.035
7905C	25	42	9	7.8	5.4	18,000	26,000	0.042
7906C	30	47	9	8.2	6.2	16,000	24,000	0.048
7907C	35	55	10	12	9.1	14,000	22,000	0.075
7908C	40	62	12	14.5	10.6	12,000	20,000	0.11
7909C	45	68	12	16	12.6	10,000	18,000	0.13
7910C	50	72	12	16.5	15	8,000	16,000	0.14
7911C	55	80	13	19.1	17.8	7,500	15,000	0.183
7912C	60	85	13	19.5	18.5	7,000	14,000	0.198
7913C	65	90	13	20.3	20.5	6,500	13,000	0.212
7914C	70	100	16	28.1	27.5	6,300	12,000	0.342
7915C	75	105	16	28.6	29.2	6,000	10,000	0.36
7916C	80	116	16	29	30.5	5,500	10,000	0.381
7917C	85	120	18	39	40.5	5,000	9,000	0.542
7918C	90	125	18	41.2	46	5,000	8,500	0.56

7919C	95	130	18	42.5	48	4,500	8,500	0.604
7920C	100	140	20	48.5	52	4,300	8,200	0.808
7921C	105	145	20	51	57	4,000	8,000	0.83
7922C	110	150	20	52	58	3,800	7,500	0.88
7924C	120	165	22	72	80.1	3,600	7,200	1.15
7926C	130	180	24	77.5	90.1	3,400	7,000	1.54
7928C	140	190	24	79.5	95.5	3,200	6,800	1.64
7930C	150	210	28	102	122	3,000	6,500	2.97
7932C	160	220	28	145.6	167.4	2,800	6,300	3.12

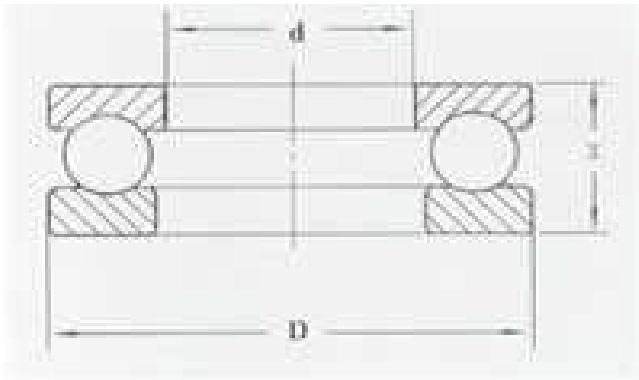


[www.sks-bearing.com](http://www.sks-bearing.com)

**SKS BEARING**  
47807 Krefeld, Germany

Tel: +49-17621845243; Fax: +49-21514869900

## THRUST BALL BEARING



Bearing No.	Boundary dimensions			Basic load ratings(kN)		Limiting speed		Mass
	mm			Dynamic	Static	rpm		Kg
	d	D	T	Cr	Cor	Grease	Oil	≈
51103	17	30	9	10.8	18.2	5,300	7,500	0.024
51104	20	35	10	14.2	24.5	4,800	6,700	0.036
51105	25	42	11	15.2	30.2	4,300	6,000	0.055
51106	30	47	11	16	34.2	4,000	5,600	0.062
51107	35	52	12	18.2	41.5	3,800	5,300	0.077
51108	40	60	13	26.8	62.8	3,400	4,800	0.11
51109	45	65	14	27	66	3,200	4,500	0.14



51110	50	70	14	27.2	69.2	3,000	4,300	0.15
51111	55	78	16	33.8	89.2	2,800	4,000	0.22
51112	60	85	17	40.2	108	2,600	3,800	0.27
51113	65	90	18	40.5	112	2,400	3,600	0.31
51114	70	95	18	40.8	115	2,200	3,400	0.33
51115	75	100	19	48.2	140	2,000	3,200	0.38
51116	80	105	19	48.5	145	1,900	3,000	0.4

51203	17	35	12	17	27.2	4,500	6,300	0.048
51204	20	40	14	22.2	37.5	3,800	5,300	0.075
51205	25	47	15	27.8	50.5	3,400	4,800	0.11
51206	30	52	16	28	54.2	3,200	4,500	0.13
51207	35	62	18	39.2	78.2	2,800	4,000	0.21
51208	40	68	19	47	98.2	2,400	3,600	0.26
51209	45	73	20	47.8	105	2,200	3,400	0.3
51210	50	78	22	48.5	112	2,000	3,200	0.37
51211	55	90	25	67.5	158	1,900	3,000	0.58
51212	60	95	26	73.5	178	1,800	2,800	0.66
51213	65	100	27	74.8	188	1,700	2,600	0.72
51214	70	105	27	73.5	188	1,600	2,400	0.75
51215	75	110	27	74.8	198	1,500	2,200	0.82
51216	80	115	28	83.8	222	1,400	2,000	0.9
51217	85	125	31	102	280	1,300	1,900	1.21
51218	90	135	35	115	315	1,200	1,800	1.65
51220	100	150	38	132	375	1,100	1,700	2.21
51222	110	160	38	138	412	1,000	1,600	2.39

51305	25	52	18	35.5	61.5	3,000	4,300	0.17
51306	30	60	21	42.8	78.5	2,400	3,600	0.26
51307	35	68	24	55.2	105	2,000	3,200	0.37
51308	40	78	26	69.2	135	1,900	3,000	0.53
51309	45	85	28	75.8	150	1,700	2,600	0.66
51310	50	95	31	96.5	202	1,600	2,400	0.92
51311	55	105	35	115	242	1,500	2,200	1.28
51312	60	110	35	118	262	1,400	2,000	1.37
51313	65	115	36	115	262	1,300	1,900	1.48
51314	70	125	40	148	340	1,200	1,800	1.98
51315	75	135	44	162	380	1,100	1,700	2.58
51316	80	140	44	160	380	1,000	1,600	2.69
51317	85	150	49	208	495	950	1,500	3.47
51318	90	155	50	205	495	900	1,400	3.69
51320	100	170	55	235	595	800	1,200	4.86

51405	25	60	24	55.5	89.2	2,200	3,400	0.31
-------	----	----	----	------	------	-------	-------	------

51406	30	70	28	72.5	125	1,900	3,000	0.51
51407	35	80	32	86.8	155	1,700	2,600	0.76
51408	40	90	36	112	205	1,500	2,200	1.06
51409	45	100	39	140	262	1,400	2,000	1.41
51410	50	110	43	160	302	1,300	1,900	1.86
51411	55	120	48	182	355	1,100	1,700	2.51
51412	60	130	51	200	395	1,000	1,600	3.08
51413	65	140	56	215	448	900	1,400	3.91
51414	70	150	60	255	560	850	1,300	4.85
51415	75	160	65	268	615	800	1,200	6.08
51416	80	170	68	292	692	750	1,100	7.12
51417	85	180	72	318	782	700	1,000	8.28

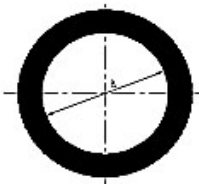
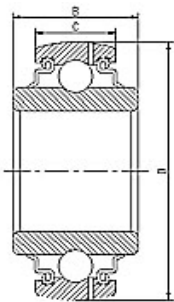


[www.sks-bearing.com](http://www.sks-bearing.com)

**SKS BEARING**  
47807 Krefeld, Germany

Tel: +49-17621845243: Fax: +49-21514869900

## AGRICULTURAL BEARING



Round bore and spherical O.D.

Bearing No.	Boundary dimensions(in)				Basic load ratings(N)	Mass(Kg)
	d	D	Bi	Be	Cr	≈
GW208PPB6	1.188	3.1496	1.437	0.708	26200	0.72
GW209PPB11	1.7811	3.3464	1.437	0.866	29200	0.64
GW209PPB2	1.7717	3.3464	1.189	1.189	29200	0.65
GW209PPB4	1.535	3.3464	1.189	1.189	29200	0.75
GW210PPB2	1.938	3.5433	1.189	1.189	31500	0.71
GW210PPB5	1.785	3.5433	1.189	1.189	31500	0.79

<b>GW211PPB10</b>	1.938	3.937	1.311	1.311	39100	1.02
<b>GW211PPB2</b>	2.188	3.937	1.311	1.311	39100	0.97
<b>GW211PPB9</b>	2.194	3.937	1.311	0.984	39100	0.92
<b>W208PPB2</b>	1.5005	3.1496	1.689	0.708	26200	0.72
<b>W208PPB23</b>	1.5005	3.1496	1.689	1.189	26200	0.68
<b>W208PPB4</b>	1.188	3.1496	1.189	1.189	26200	0.72
<b>W208PPB6</b>	1.188	3.1496	1.437	0.708	26200	0.72
<b>W209PPB11</b>	1.7811	3.3464	1.437	0.866	29200	0.64
<b>W209PPB2</b>	1.7717	3.3464	1.189	1.189	29200	0.65
<b>W209PPB4</b>	1.535	3.3464	1.189	1.189	29200	0.75
<b>W210PPB2</b>	1.938	3.5433	1.189	1.189	31500	0.71
<b>W210PPB5</b>	1.785	3.5433	1.189	1.189	31500	0.79
<b>W211PPB2</b>	2.188	3.937	1.311	1.311	39100	0.97
<b>W208PPB7</b>	1	3.1496	1.189	0.708	26200	0.64

**Square bore and spherical O.D.**

Bearing No.	Boundary dimensions(in)				Basic load ratings(N)	Mass(Kg)
	d	D	Bi	Be	Cr	≈
<b>GW208PPB5</b>	2001-1-8	3.1496	1.437	0.708	26200	0.67
<b>GW208PPB8</b>	2001-1-8	3.1496	1.437	1.189	26200	0.75
<b>GW209PPB5</b>	2001-1-4	3.3464	1.437	1.189	29200	0.79
<b>GW209PPB8</b>	2001-1-4	3.3464	1.437	0.748	29200	0.75
<b>GW210PPB4</b>	2001-1-8	3.5433	1.189	1.189	31500	0.96
<b>GW211PPB11</b>	2001-1-2	3.937	1.75	0.984	39100	1.02
<b>GW211PPB3</b>	2001-1-2	3.937	1.311	1.311	39100	1.21
<b>GW211PPB6</b>	2001-1-2	4.125	1.75	1.437	39100	1.86
<b>W208PPB11</b>	7月8日	3.428	1.437	1.189	26200	0.93
<b>W208PPB12</b>	2001-1-8	3.428	1.437	1.189	26200	0.85
<b>W208PPB13</b>	7月8日	3.1496	1.437	0.708	26200	0.73
<b>W208PPB18</b>	7月8日	3.4385	1.437	1.189	26200	0.93
<b>W208PPB19</b>	2001-1-8	3.4385	1.437	1.189	26200	0.85
<b>W208PPB5</b>	2001-1-8	3.1496	1.437	0.708	26200	0.67
<b>W208PPB8</b>	2001-1-8	3.1496	1.437	1.189	26200	0.75
<b>W208PPB9</b>	1	3.1496	1.437	1.189	26200	0.79
<b>W209PPB5</b>	2001-1-4	3.3464	1.437	1.189	29200	0.79
<b>W209PPB7</b>	2001-1-4	3.4380	1.437	1.189	29200	0.84
<b>W209PPB8</b>	2001-1-4	3.3464	1.437	0.748	29200	0.75
<b>W210PPB4</b>	2001-1-8	3.5433	1.189	1.189	31500	0.96
<b>W210PPB6</b>	2001-1-8	3.5433	1.437	1.189	31500	1.02
<b>W211PPB3</b>	2001-1-2	3.937	1.311	1.311	39100	1.21
<b>W211PPB6</b>	2001-1-2	4.125	1.75	1.437	39100	1.86

**Round bore and cylindrical O.D.**

Bearing No.	Boundary dimensions(in)				Basic load ratings(N)	Mass(Kg)
-------------	-------------------------	--	--	--	-----------------------	----------



UC201		12	47	31	16	12.7	18.3	5	M6x1.0	12890	6490	0.21
UC201-8	1\2		47	31	16	12.7	18.3	5	1/4-28UNF	12890	6490	0.21
UC202		15	47	31	16	12.7	18.3	5	M6x1.0	12890	6490	0.2
UC202-10	5\8		47	31	16	12.7	18.3	5	1/4-28UNF	12890	6490	0.19
UC203		17	47	31	16	12.7	18.3	5	M6x1.0	12890	6490	0.18
UC204		20	47	31	16	12.7	18.3	5	M6x1.0	12890	6490	0.17
UC204-12	3\4		47	31	16	12.7	18.3	5	1/4-28UNF	12890	6490	0.18
UC205		25	52	34	17	14.3	19.7	5.5	M6x1.0	14000	7560	0.2
UC205-14	7\8		52	34	17	14.3	19.7	5.5	1/4-28UNF	14000	7560	0.23
UC205-15	15\16		52	34	17	14.3	19.7	5.5	1/4-28UNF	14000	7560	0.21
UC205-16	1		52	34	17	14.3	19.7	5.5	1/4-28UNF	14000	7560	0.2
UC206	1-1\16	30	62	38.1	19	15.9	22.2	6	M6x1.0	19510	11160	0.33
UC206-17	1-1\8		62	38.1	19	15.9	22.2	6	1/4-28UNF	19510	11160	0.37
UC206-18	1-3\16		62	38.1	19	15.9	22.2	6	1/4-28UNF	19510	11160	0.35
UC206-19	1-1\4		62	38.1	19	15.9	22.2	6	1/4-28UNF	19510	11160	0.33
UC206-20	1-1\4		62	38.1	19	15.9	22.2	6	1/4-28UNF	19510	11160	0.3
UC207		35	72	42.9	20	17.5	25.4	6.5	M8x1.0	25640	15330	0.4
UC207-20	1-1\4		72	42.9	20	17.5	25.4	6.5	5-16/24UNF	25640	15330	0.55
UC207-21	1-5\16		72	42.9	20	17.5	25.4	6.5	5-16/24UNF	25640	15330	0.52
UC207-22	1-3\8		72	42.9	20	17.5	25.4	6.5	5-16/24UNF	25640	15330	0.49
UC207-23	1-7\16		72	42.9	20	17.5	25.4	6.5	5-16/24UNF	25640	15330	0.46
UC208		40	80	49.2	21	19	30.2	8	M8x1.0	28890	17110	0.65
UC208-24	1-1\2		80	49.2	21	19	30.2	8	5-16/24UNF	28890	17110	0.69
UC208-25	1-9\16		80	49.2	21	19	30.2	8	5-16/24UNF	28890	17110	0.67
UC209		45	85	49.2	22	19	30.2	8	M8x1.0	32670	18220	0.7
UC209-26	1-5\8		85	49.2	22	19	30.2	8	5-16/24UNF	32670	18220	0.8
UC209-27	1-11\16		85	49.2	22	19	30.2	8	5-16/24UNF	32670	18220	0.76
UC209-28	1-3\4		85	49.2	22	19	30.2	8	5-16/24UNF	32670	18220	0.71
UC210		50	90	51.6	24	19	32.6	9	M10x1.25	35110	20840	0.8
UC210-30	1-7\8		90	51.6	24	19	32.6	9	3/8-24UNF	35110	20840	0.87
UC210-31	1-15\16		90	51.6	24	19	32.6	9	3/8-24UNF	35110	20840	0.82
UC210-32	2		90	51.6	24	19	32.6	9	3/8-24UNF	35110	20840	0.77
UC211		55	100	55.6	25	22.2	33.4	9	M10x1.25	43330	26000	1.08
UC211-32	2		100	55.6	25	22.2	33.4	9	3/8-24UNF	43330	26000	1.23
UC211-34	2-1\8		100	55.6	25	22.2	33.4	9	3/8-24UNF	43330	26000	1.18
UC211-35	2-3\6		100	55.6	25	22.2	33.4	9	3/8-24UNF	43330	26000	1.06
UC212		60	110	65.1	27	25.4	39.7	10.5	M10x1.25	51110	36000	1.53
UC212-36	2-1\4		110	65.1	27	25.4	39.7	10.5	3/8-24UNF	51110	36000	1.66
UC212-38	2-3\8		110	65.1	27	25.4	39.7	10.5	3/8-24UNF	51110	36000	1.51
UC212-39	2-7\16		110	65.1	27	25.4	39.7	10.5	3/8-24UNF	51110	36000	1.44
UC213		65	120	65.1	28	25.4	39.7	12	M10x1.25	56890	39560	1.85
UC213-40	2-1\2		120	65.1	28	25.4	39.7	12	3/8-24UNF	56890	39560	1.94
UC214		70	125	74.6	30	30.2	44.4	12	M12x1.25	62220	44000	2.1

UC214-43	2-11\16		125	74.6	30	30.2	44.4	12	7/16-20UNF	62220	44000	2.2
UC214-44	2-3\4		125	74.6	30	30.2	44.4	12	7/16-20UNF	62220	44000	2.11
UC215		75	130	77.8	30	33.3	44.5	12	M12x1.25	66220	48890	2.35
UC215-47	2-15\16		130	77.8	30	33.3	44.5	12	7/16-20UNF	66220	48890	2.39
UC215-48	3		130	77.8	30	33.3	44.5	12	7/16-20UNF	66220	48890	2.26
SB201		12	40	22	12	6	16	4	M6x1.0	9600	4400	0.1
SB201-8	1\2		40	22	12	6	16	4	1/4-28UNF	9600	4400	0.1
SB202		15	40	22	12	6	16	4	M6x1.0	9600	4400	0.09
SB202-10	5\8		40	22	12	6	16	4	1/4-28UNF	9600	4400	0.09
SB203		17	40	22	12	6	16	4	M6x1.0	9600	4400	0.08
SB204		20	47	25	14	7	18	5	M6x1.0	12890	6490	0.13
SB204-12	3\4		47	25	14	7	18	5	1/4-28UNF	12890	6490	0.13
SB205		25	52	27	15	7.5	19.5	5.5	M6x1.0	14000	7560	0.16
SB205-14	7\8		52	27	15	7.5	19.5	5.5	1/4-28UNF	14000	7560	0.18
SB205-15	15\16		52	27	15	7.5	19.5	5.5	1/4-28UNF	14000	7560	0.18
SB205-16	1		52	27	15	7.5	19.5	5.5	1/4-28UNF	14000	7560	0.16
SB206		30	62	30	16	8	22	6	M8x1.0	19510	11160	0.25
SB206-17	1-1\16		62	30	16	8	22	6	5/16-24UNF	19510	11160	0.27
SB206-18	1-1\8		62	30	16	8	22	6	5/16-24UNF	19510	11160	0.26
SB206-19	1-3\16		62	30	16	8	22	6	5/16-24UNF	19510	11160	0.25
SB206-20	1-1\4		62	30	16	8	22	6	5/16-24UNF	19510	11160	0.24
SB207		35	72	32	17	8.5	23.5	6	M8x1.0	25640	15330	0.38
SB207-20	1-1\4		72	32	17	8.5	23.5	6	5/16-24UNF	25640	15330	0.43
SB207-21	1-5\16		72	32	17	8.5	23.5	6	5/16-24UNF	25640	15330	0.42
SB207-22	1-3\8		72	32	17	8.5	23.5	6	5/16-24UNF	25640	15330	0.38
SB207-23	1-7\16		72	32	17	8.5	23.5	6	5/16-24UNF	25640	15330	0.31
SB208		40	80	34	18	9	25	6	M8x1.0	28890	17110	0.5
SB208-24	1-1\2		80	34	18	9	25	6	5/16-24UNF	28890	17110	0.52
CSB201		12	40	22	12	6	16	4	M6x1.0	2160	990	0.1
CSB201-8	1\2		40	22	12	6	16	4	1/4-28UNF	2160	990	0.1
CSB202		15	40	22	12	6	16	4	M6x1.0	2160	990	0.09
CSB202-10	5\8		40	22	12	6	16	4	1/4-28UNF	2160	990	0.09
CSB203		17	40	22	12	6	16	4	M6x1.0	2160	990	0.08
CSB204		20	47	25	14	7	18	5	M6x1.0	12890	6490	0.13
CSB204-12	3\4		47	25	14	7	18	5	1/4-28UNF	12890	6490	0.13
CSB205		25	52	27	15	7.5	19.5	5.5	M6x1.0	14000	7560	0.16
CSB205-14	7\8		52	27	15	7.5	19.5	5.5	1/4-28UNF	14000	7560	0.18
CSB205-15	15\16		52	27	15	7.5	19.5	5.5	1/4-28UNF	14000	7560	0.18
CSB205-16	1		52	27	15	7.5	19.5	5.5	1/4-28UNF	14000	7560	0.16
CSB206		30	62	30	16	8	22	6	M8x1.0	19510	11160	0.25
CSB206-17	1-1\16		62	30	16	8	22	6	5/16-24UNF	19510	11160	0.27

CSB206-18	1-1\8		62	30	16	8	22	6	5/16-24UNF	19510	11160	0.26
CSB206-19	1-3\16		62	30	16	8	22	6	5/16-24UNF	19510	11160	0.25
CSB206-20	1-1\4		62	30	16	8	22	6	5/16-24UNF	19510	11160	0.24
CSB207		35	72	32	17	8.5	23.5	6	M8x1.0	25650	15340	0.38
CSB207-20	1-1\4		72	32	17	8.5	23.5	6	5/16-24UNF	25650	15340	0.43
CSB207-21	1-5\16		72	32	17	8.5	23.5	6	5/16-24UNF	25650	15340	0.42
CSB207-22	1-3\8		72	32	17	8.5	23.5	6	5/16-24UNF	25650	15340	0.38
CSB207-23	1-7\16		72	32	17	8.5	23.5	6	5/16-24UNF	25650	15340	0.31
CSB208		40	80	34	18	9	25	8	M8x1.0	28890	17110	0.5
CSB208-24	1-1\2		80	34	18	9	25	8	5/16-24UNF	28890	17110	0.52



[www.sks-bearing.com](http://www.sks-bearing.com)

**SKS BEARING**  
47807 Krefeld, Germany

Tel: +49-17621845243; Fax: +49-21514869900

## SPHERICAL ROLLER THRUST BEARING



Bearing No.	Boundary dimensions				Basic load ratings(kN)		Limiting speed	Mass
	mm				Dynamic	Static	rpm	kg
	d	D	B	r <sub>smin</sub>	Cr	Cor	Oil	≈
<b>29230</b>	150	215	39	1.5	340	1,340	1,800	4.56
<b>29232</b>	160	225	39	1.5	360	1,460	1,700	4.88
<b>29234</b>	170	240	42	1.5	425	1,770	1,600	6.02
<b>29236</b>	180	250	42	1.5	450	1,920	1,600	6.27
<b>29238</b>	190	270	48	2	530	2,230	1,400	8.8
<b>29240</b>	200	280	48	2	535	2,300	1,400	9.14

<b>29317</b>	85	150	39	1.5	265	820	2,300	2.94
<b>29318</b>	90	155	39	1.5	285	915	2,300	3.08
<b>29320</b>	100	170	42	1.5	345	1,160	2,100	3.94
<b>29322</b>	110	190	48	2	445	1,500	1,800	5.78
<b>29324</b>	120	210	54	2.1	535	1,770	1,600	7.92
<b>29326</b>	130	225	58	2.1	615	2,100	1,500	9.76
<b>29328</b>	140	240	60	2.1	685	2,360	1,400	11.4
<b>29330</b>	150	250	60	2.1	675	2,390	1,400	12
<b>29332</b>	160	270	67	3	820	2,860	1,300	15.9
<b>29334</b>	170	280	67	3	855	3,050	1,200	16.6
<b>29336</b>	180	300	73	3	995	3,600	1,100	21.2
<b>29338</b>	190	320	78	4	1,150	4,250	1,100	26
<b>29340</b>	200	340	85	4	1,280	4,600	980	31.9

<b>29412</b>	60	130	42	1.5	283	805	2,600	2.78
<b>29413</b>	65	140	45	2	330	945	2,400	3.44
<b>29414</b>	70	150	48	2	365	1,040	2,200	4.19
<b>29415</b>	75	160	51	2	415	1,190	2,100	5.07
<b>29416</b>	80	170	54	2.1	460	1,380	1,900	6.09
<b>29417</b>	85	180	58	2.1	490	1,480	1,800	7.2
<b>29418</b>	90	190	60	2.1	545	1,680	1,700	8.38
<b>29420</b>	100	210	67	3	685	2,130	1,500	11.5
<b>29422</b>	110	230	73	3	845	2,620	1,400	15
<b>29424</b>	120	250	78	4	975	3,050	1,300	18.6
<b>29426</b>	130	270	85	4	1,080	3,550	1,200	23.7
<b>29428</b>	140	280	85	4	1,110	3,750	1,200	25.2
<b>29430</b>	150	300	90	4	1,280	4,350	1,100	30.5
<b>29432</b>	160	320	95	5	1,500	5,150	1,000	37
<b>29434</b>	170	340	103	5	1,660	5,750	940	45
<b>29436</b>	180	360	109	5	1,840	6,200	890	52.9
<b>29438</b>	190	380	115	5	2,010	6,800	840	62
<b>29440</b>	200	400	122	5	2,230	7,650	790	73.3